

2010

Annual Report: 2010

CentraCare Health

Follow this and additional works at: https://digitalcommons.centracare.com/annual_report



Part of the [Organizational Communication Commons](#)

Recommended Citation

CentraCare Health, "Annual Report: 2010" (2010). *Annual Report*. 4.
https://digitalcommons.centracare.com/annual_report/4

This Annual Report is brought to you for free and open access by the CentraCare Health Publications (Newsletters, Annual Reports, Etc.) at DigitalCommons@CentraCare Health. It has been accepted for inclusion in Annual Report by an authorized administrator of DigitalCommons@CentraCare Health. For more information, please contact schlepers@centracare.com.



Care above all

2010 annual report

CentraCare Health System

Mission Statement

CentraCare Health System works to improve the health of every patient, every day.

Vision

CentraCare Health System will be the leader in Minnesota for quality, safety, service and value.

Core Values:

Patient Centered

Integrity

Collaboration

Compassion

Stewardship

CENTRACARE Health System



dear friends

What a year this has been!

We at CentraCare Health System have adopted a new vision statement to inspire us to better serve our community:

“CentraCare Health System will be the leader in Minnesota for quality, safety, service and value.”

We have many initiatives under way as we move in that direction.

We are working to improve patient safety and patient satisfaction. We have developed a system-wide quality scorecard to help us track our progress toward that elusive goal of perfection. Here are results of just a few initiatives, from across our health system:

- CentraCare Clinic ranked in the top 10 percent of all Minnesota medical groups for diabetes care and in the top 15 percent for vascular care;
- St. Benedict’s Senior Community successfully reduced the occurrence of falls, from 20.2 percent of residents to 16.6 percent;
- CentraCare Health System – Long Prairie’s efforts with the Surgical Care Improvement Project resulted in 100 percent performance in all categories for the fourth quarter of calendar year 2009;
- CentraCare Health System – Melrose exceeded its goal for inpatient satisfaction, ranking in the 99th percentile in a national database — and the nursing home in Melrose performed at or better than state averages on all of its performance goals;
- St. Cloud Hospital continues its efforts to improve compliance with national core measures. For instance, the hospital’s compliance on four measures related to treatment of heart failure improved from 80 percent in 2009 to 90 percent in 2010.

We have collaborated with local, state and national partners on initiatives such as TakeHeart, which is successfully increasing the survival rate from sudden cardiac arrest. We have launched new programs such as pediatric walk-in care and expanded others.

We added 78 full-time equivalents to our employment roster during the past fiscal year, bringing our total number of employees as of June 30 to 6,523. We have recruited 28 physicians this calendar year, for a net gain of 17 doctors in the communities we serve.

We continue to assess the impact that health care reform will have on our patients and our health system. We are committed to caring for the people of our region, regardless of the challenges that legislative change presents.

CentraCare provides exceptional quality care with compassion. Thank you for your interest in and support of CentraCare Health System.

Sincerely,

A handwritten signature in black ink that reads "Terry Pladson". The signature is written in a cursive, flowing style.

Terry Pladson, MD
President
CentraCare Health System

financials

CentraCare Health System Statement of Operations

	Fiscal Year Ended 30-Jun-10	Fiscal Year Ended 30-Jun-09
Revenue	\$792,673,672	\$756,142,074
Expenses	749,549,556	704,007,845
Operating Income (Loss)	\$43,124,116	\$52,134,229
Operating Margin	5.44%	6.89%
Annual Capital Expenditures	\$66,165,747	\$60,504,645

CentraCare Health System Balance Sheet

	30-Jun-10	30-Jun-09
Current Assets	\$178,878,601	\$210,512,572
Restricted Investments	408,446,862	360,634,408
Property and Equipment, net	397,573,607	366,929,598
Other Assets	24,847,504	32,936,612
Total Assets	\$1,009,746,574	\$971,013,190
Current Liabilities	\$127,106,580	\$135,483,557
Long-Term Debt	405,789,267	406,333,760
Other Liabilities	59,730,362	48,658,523
Net Assets	417,120,365	380,537,350
Total Liabilities & Net Assets	\$1,009,746,574	\$971,013,190

community benefit

Being a community health care leader means more than providing state-of-the-art health care. It means striving to make a difference and working to actively address vital community health care needs. We continue to focus on reinvesting in the community by offering free health care events, screenings and education to ensure the good health of the people of Central Minnesota.

Women & Family Health Education

St. Cloud Hospital Women & Children's Center offers a variety of educational opportunities to health care professionals, women and families. We belong to Spirit of Women®, an elite coalition of American hospitals that ascribe to high standards of excellence in women's health, education and community outreach. St. Cloud Hospital is the only Spirit of Women® hospital in Minnesota. As part of the Spirit of Women® network, we find the very best in women's health programming from across the country and bring it to Central Minnesota.

Spirit of Women® Day of Dance

Nearly 450 men, women and children attended the second annual Day of Dance Feb. 25, which offered heart-healthy food and health information, and taught new dance moves to a variety of dance styles. More than 100 people took advantage of the health screenings.

Long Prairie

Approximately 250 people attended the Long Prairie Health Fair, which offered free screenings and 35 health information booths. Business health fairs and screenings also were offered in various businesses in Long Prairie throughout the year. Cardiopulmonary resuscitation (CPR) and first aid classes were taught and an eight-week Health Care Careers Class was offered to high school students in Long Prairie.

Melrose

CentraCare Health System – Melrose offered free certified nurses assistant, diabetes and childbirth classes, along with rehabilitation services to high school students for sports safety.

Two little dancers work on their new moves at Day of Dance.





Local women participate in video otoscope evaluation of the ears at Women's Health 101.

Women's Health 101

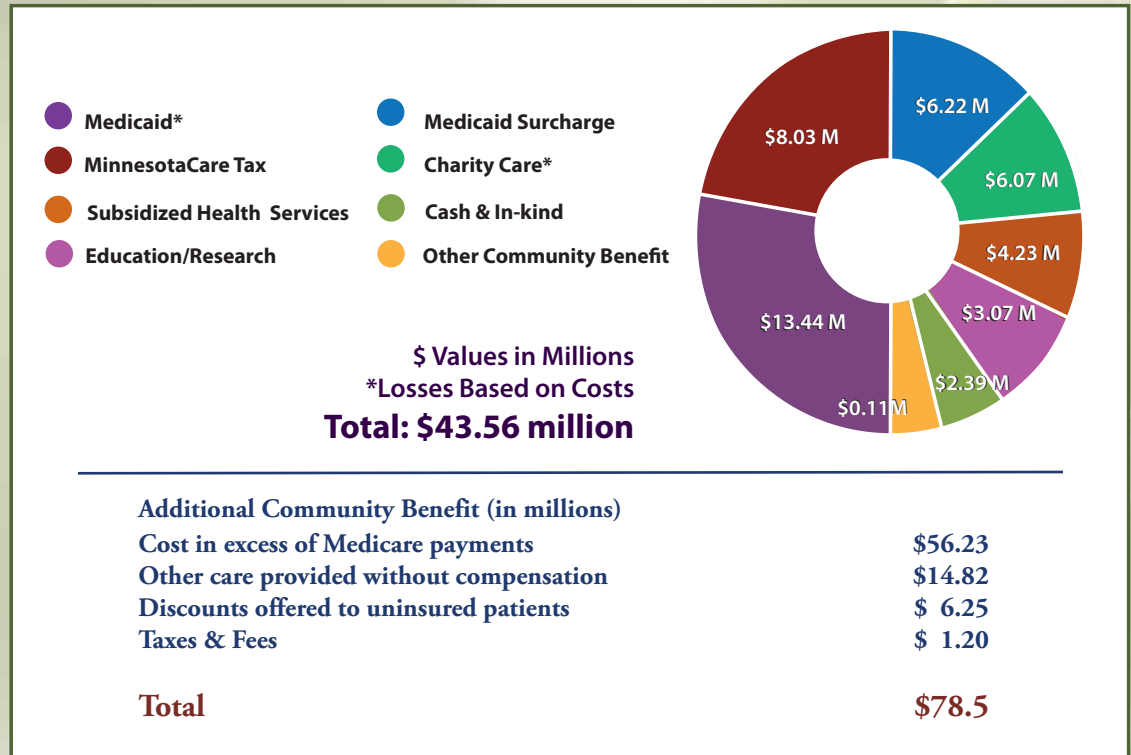
Sponsored by CentraCare Health System, this event includes educational booths, free screenings and presentations on more than 20 health-related topics. The event drew 448 registered participants, 22 speakers, 47 booths and 25 volunteers.

St. Benedict's Senior Community

St. Benedict's Senior Community helped sponsor the Expo for Seniors, the Memory Walk, the Jake and Mary Essen Alzheimer's Education Fund and Whitney WithOut Walls, an outreach activity of the Whitney Senior Center which offers a variety of topics including entertainment, education and exercise programs.

The **BLEND** (Better Living: Exercise & Nutrition Daily) initiative, supported by the CentraCare Health Foundation, is a community collaborative designed to improve the health of area children by addressing the problem of childhood obesity. BLEND's goal is to see a Body Mass Index reduction of 10 percent in area children by 2016.

With the help of community partners, BLEND works with schools, youth-serving organizations, local government and the medical community to increase awareness of the importance of daily physical activity and good nutritional choices for kids and families. BLEND has engaged more than 10,000 individuals and families through annual community events.



family of services

CentraCare Health System

St. Cloud Hospital

- St. Cloud Hospital
 - Behavioral Health Services
 - Bone & Joint Center
 - Breast Center
 - Center for Surgical Care
 - CentraCare Diabetes Center
 - CentraCare Digestive Center
 - CentraCare Kidney Program
 - CentraCare Wound Center
 - Central Minnesota Heart Center
 - Coborn Cancer Center
 - Emergency Trauma Center
 - Home Care & Hospice
 - Imaging Services
 - Intensive Care Unit
 - Internal Medicine
 - Neuroscience & Spine Center
 - Rehabilitation Center
 - Sleep Center
 - Spiritual Care
 - Stroke Center
 - Women & Children's Center
- Mid-Minnesota Family Medicine Center
 - University of Minnesota/St. Cloud Hospital Family Medicine Residency
- St. Benedict's Senior Community
 - Assisted Living (Monticello & St. Cloud)
 - Home Care (Monticello & St. Cloud)
 - Memory Care (Monticello & St. Cloud)
 - Nursing Home (St. Cloud)
 - Respite Care (St. Cloud)
 - Retirement Apartments (Monticello & St. Cloud)
 - Short Stay Care (St. Cloud)

CentraCare Health System – Long Prairie

- Long Prairie Clinic
- Long Prairie Hospital
 - Ambulance
 - Cardiac Rehabilitation
 - Chemotherapy
 - Emergency Services
 - Imaging
 - Laboratory
 - Obstetrics
 - Rehabilitation
 - Sleep Studies Program
 - Surgical Services
 - Visiting Specialists
- Nursing Home
- Eagle Valley Clinic, Eagle Bend - joint venture between CentraCare Health System - Long Prairie & Lakewood Health System

CentraCare Health System – Melrose

- Melrose Clinic
- Melrose Hospital
 - Chemotherapy
 - Emergency Services
 - Imaging
 - Laboratory
 - Obstetrics
 - Rehabilitation
 - Surgical Services
 - Visiting Specialists
- CentraCare Radiation Oncology (Alexandria)
- Park View Center
- Pine Villa Care Center
 - Alzheimer's Unit

CentraCare Clinic

- Becker
- Health Plaza (St. Cloud)
- Heartland (St. Cloud)
- River Campus (St. Cloud)
- St. Joseph
- Women & Children (St. Cloud)
- Big Lake Clinic - joint venture between CentraCare Health System & New River Medical Center in Monticello

CentraCare Health Services

- CentraCare Laboratory Services
- CentraCare Pharmacy (Becker, Heartland, Health Plaza & St. Cloud Hospital)
- CentraCare Surgery Center (Health Plaza)
- Monticello Cancer Center - joint venture of CentraCare Health System, New River Medical Center & North Memorial Health Care

CentraCare Health Foundation

- St. Cloud Hospital programs supported:
 - Behavioral Health
 - Breast Center
 - CentraCare Diabetes Center
 - CentraCare Kidney Program
 - Central Minnesota Heart Center
 - Clara's House
 - Clinical Research: cancer and heart
 - Coborn Cancer Center
 - Gorecki Guest House
 - Hospice
 - Mid-Minnesota Family Medicine Center
 - Women & Children's Center
- St. Benedict's Senior Community programs supported:
 - Greatest Needs
 - Spiritual Care
 - Alzheimer's Care
- CentraCare Health System - Long Prairie
- CentraCare Health System - Melrose

awards and recognition



CentraCare Health System was named the #1 Best Place to Work in Minnesota in the large company category by the *Minneapolis/*

St. Paul Business Journal. The recognition is based entirely on employees' responses to an online survey conducted this spring. The Best Places to Work award indicates that CentraCare employees find their work interesting, challenging and rewarding. This is important because engaged employees provide better care and support to patients and their families.



St. Cloud Hospital received the Thomson Reuters Top 100 Hospital award for the fifth consecutive year

and is an eight-time award winner. (Only 13 hospitals in the nation have won this award more times than St. Cloud Hospital). The hospital also was honored for the second time with the Everest Award for National Benchmarks (Only eight other hospitals in the nation have won this award two straight years).

St. Cloud Hospital was verified as a Level II Trauma Center and **CentraCare Health System – Long Prairie** and **Melrose** were verified as Level IV Trauma Centers by the Verification Review Committee, an ad hoc committee of the Committee on Trauma of the American College of Surgeons. The program provides confirmation that a hospital has demonstrated its commitment to providing the highest quality trauma care.

The **Intensive Care Unit (ICU) at St. Cloud Hospital** was a recipient of the 2009 Beacon Award for Critical Care Excellence. This is the second time the ICU has received the Beacon Award given by the American Association of Critical Care Nurses.

St. Cloud Hospital received the Consumer Choice award given by the National Research Corporation and was recognized in *Modern Healthcare* magazine. Consumers in St. Cloud ranked St. Cloud Hospital at the top of the list based on: best overall quality; best image and reputation; best doctors and best nurses.



The Spirit of Women® Health Network selected **St. Cloud Hospital** as a Spirit of Women® Premier Hospital, based on an evaluation using the National Standards of Excellence in Women's Health. The standards measure clinical excellence in women's health care and community outreach.



St. Cloud Hospital received the bronze medal of honor for achieving a 75 percent conversion rate for organ donation this past year. The conversion rate is the percent of actual organ donors out of the potential number possible. The award was presented on behalf of the United States Department of Health and Human Services and LifeSource Organ & Tissue Donation.

St. Cloud Hospital earned four Minnesota Hospital Association Patient Safety Excellence Awards, the Safe Site initiative that acknowledges the hard work being done to tackle wrong-site surgery, the Safe Count initiative that aims to prevent objects from being retained after a patient gives birth, the Safe from Falls initiative which aims to prevent people from falling during a hospital stay and Safe Skin which aims at preventing pressure ulcers. These awards indicate that St. Cloud Hospital has implemented more than 90 percent of the suggested best practices.

Several **CentraCare Clinic** sites received achievement and improvement awards in diabetes and vascular care from the Buyers-Health Care Action Group Minnesota Bridges to Excellence program. **CentraCare Clinic – Becker** was recognized for achievement in diabetes and vascular care; **Health Plaza - Internal Medicine** in vascular care; **River Campus - Internal Medicine** in diabetes care and **Melrose** in diabetes care. **CentraCare Clinic – Heartland** qualified in the improvement category for diabetes and vascular care; **Health Plaza - Family Medicine** for vascular care; and **Central Minnesota Heart Center** for vascular care.

CentraCare Health System – Long Prairie earned two Minnesota Hospital Association Patient Safety Excellence Awards for its work on preventing adverse surgical events through the Safe Site initiative and for preventing retained objects in the operating room through the Safe Account initiative. Long Prairie also was recognized with the Recognition of Parentage award, which recognizes hospitals for providing timely, accurate birth record data to the Department of Human Services. Thirteen hospitals in the state were recognized.

St. Benedict's Senior Community (SBSC) was one of the 2009 recipients of the Step I National Quality Award presented by the American Health Care Association and National Center for Assisted Living, which recognizes providers that have developed a foundation to begin a journey of continuous quality improvement. SBSC also received the Care Providers of Minnesota's Quality Improvement Team Award, which acknowledges the use of a continuous quality improvement-based approach to enhance the quality of care for residents. SBSC's Gorecki Care Center earned this award for the Falls Reduction and Prevention Plan created by nursing leadership.

quality care continues

New Technology

St. Cloud Hospital upgrades to 320-slice scanner

Imaging Services at St. Cloud Hospital is the first in Minnesota to upgrade to the Aquilion One 320-slice scanner from Toshiba. Patients in Central Minnesota now have the most advanced imaging technology possible.

The new scanner has the ability to scan an entire organ in a single rotation, which is a huge advantage in computed tomography (CT) imaging.

CentraCare Clinic offers MyChart

CentraCare Clinic patients now have access to MyChart, which gives them the ability to view their (or their children's) medical records and test results, as well as receive medical advice from their providers online.

CentraCare offers monthly e-newsletter

My Healthy News, a free, monthly e-newsletter from CentraCare Health System, is available to the public to choose the topics and services that matter to them. Then we send up-to-date information from national health resources that are personalized to their needs and interests.



Aquilion One 320-slice scanner from Toshiba

New accelerator comes to CentraCare Radiation Oncology

CentraCare Radiation Oncology at Douglas County Hospital in Alexandria, operated by CentraCare Health System – Melrose, updated its technology by installing the Varian IX linear accelerator. CentraCare Radiation Oncology has served the Alexandria area for more than 10 years.

Expanded services

DIAMOND program expands

Thanks to the success of the DIAMOND (Depression Improvement Across Minnesota, Offering a New Direction) program in Melrose, it has expanded to other CentraCare Clinic primary care sites. Patients diagnosed with depression are assigned a care manager who is trained to monitor progress through follow-up care and consult with the primary care provider or psychiatrist as needed.

Pediatric walk-in care offered

Pediatric providers at CentraCare Clinic - Women & Children began seeing sick children (without an appointment) between 8 a.m. and 4 p.m. Monday through Friday. Providers cared for 7,855 patients in the program's first seven months. Walk-in care is designed for children with acute/urgent care needs.

Extended CentraCare Clinic hours

CentraCare Clinic sites in St. Joseph and Long Prairie extended their clinic hours to better serve their patients. These extended hours are available to all CentraCare Clinic Family Medicine patients.

Orthopedic service expands in Melrose

CentraCare Health System – Melrose expanded its minimally invasive surgery services with St. Cloud Orthopedic Associates, with orthopedists visiting weekly.

Construction continues at St. Cloud Hospital

Day after day, week after week, month after month, crews have been placing girders, hoisting beams and pouring concrete for a \$225-million addition to St. Cloud Hospital.

Expected to open in Spring 2012, the 360,000-square-foot wing on the hospital's southeast side is designed to:

- Add state-of-the-art surgical suites;
- Increase the number of private rooms;
- Increase the size of the Neonatal Intensive Care Unit, providing private rooms for fragile infants and their parents;
- Replace the cramped, 25-year-old Intensive Care Unit.

Since completion of Target Field, the St. Cloud Hospital expansion has been the largest construction project in the state of Minnesota, with an average of 150 people working on-site on any given day.

As part of the overall investment, CentraCare Health Foundation has set a goal of raising \$21.7 million to support pieces of the project that wouldn't be possible without the generosity of the community.



Future look of St. Cloud Hospital from riverside

Architectural drawing: Perkins + Will

Construction in Melrose is complete

Construction on the CentraCare Health System – Melrose Clinic was completed in December 2009. The new two-story clinic includes 27 exam and procedure rooms, a retail pharmacy, a new larger laboratory, a children's play area and a beautiful waiting area with a fireplace, television and computer. The second level includes a large conference room and space for future expansion.

CentraCare Health System – Melrose Hospital opened a new main entrance to the west (the old clinic entrance), making the care process and patient flow through the hospital more user-friendly. The move enables patients and visitors to have access to ample parking. The old clinic space was remodeled and became part of the hospital's outpatient service area where visiting specialists treat patients. Admitting and the Business Office also are located there. A new rehabilitation department was added to the hospital.



New CentraCare Health System - Melrose Clinic

construction

healing close to home



Sam and Jane Salzl of Melrose

Southwest of Melrose, Sam Salzl's farm is home to dozens of chickens, 100 cows and his family — Sam's wife, Jane, a daughter and four sons. Since the Salzls started farming in 1984, they've milked cows and raised hundreds of acres of corn, wheat and alfalfa. But for Sam, the hardest chore of his life was surviving and rehabilitating from two tragic accidents.

In spring 2006, Sam suffered severe injuries while pulling a car from a ditch. He was taken to the Level IV Trauma Center at CentraCare Health System - Melrose, where he was stabilized and airlifted by a Life Link III helicopter to St. Cloud Hospital. Suffering from a traumatic brain injury, Sam laid in a coma for three weeks in the Intensive Care Unit. He received inpatient rehabilitation and then returned to Melrose for his outpatient therapy.

On Aug. 6, 2009, Sam and his son were hauling hay, when they were hit by a car from behind. Sam's son walked away from the accident, but Sam was pinned by the tractor. He again was transported by Life Link to St. Cloud Hospital, diagnosed with multiple breaks in his pelvis and airlifted to Hennepin County Medical Center (HCMC) for surgery.

The next day, Patrick Heller, MD, Sam's primary physician in Melrose, happened to be in Minneapolis and traveled to HCMC to see him. "That's something special when your doctor visits you while you are at HCMC the morning after a traumatic accident," Sam said.

After 10 days, Sam asked to be transferred to the hospital in Melrose, where he spent a month. "I like being close to home," he said. Jane agreed. "The times we had to travel to the Cities for doctor's appointments were very difficult for Sam, who had to lay on a stretcher in the care van."

For the next four months of his recovery, Sam stayed at Pine Villa Care Center in Melrose. "It was so important to have Sam close to home," Jane said. "We couldn't overlook our farm responsibilities and Sam wanted to see his family often. The doctors in Melrose were so compassionate and personable — and it was great that some of our friends were Sam's caregivers during the therapy process. With Sam's brain injury, therapy is an ongoing process so we were grateful he could receive therapy in Melrose instead of having to travel.

"The physical therapists were clear and honest with Sam," Jane said. "While he might have wanted to do 100 reps, they reminded him that he should only do 15. They gave him boundaries."

The Salzls are extremely grateful for the local services Sam received following both accidents.

"When you are receiving medical care, it's so nice that you don't have to be apart from your family, friends and the community — instead you are constantly reminded that you are a part of them," Jane said. "We know we got the best quality of care and could receive it right here in Melrose."

When H1N1 novel influenza swept the region this past winter, CentraCare immunized those who were healthy and cared for those who were not. A detailed plan also was developed to care for patients while ensuring a safe work environment for staff.

When attendees at the Great Minnesota Air Show needed medical attention in June, St. Cloud Hospital staff members, part of a mobile medical team, treated them on the spot for sprains, lacerations, diabetic reactions, asthma and heat-related illnesses.

Our physicians and staff are actively engaged in communities throughout the region. Some serve as medical directors, health officers or team doctors for community organizations and events. Many of our health care providers also participate in Project H.E.A.L., an outreach program that offers free health screenings and basic care at six Central Minnesota locations for those who have little or no insurance.

CentraCare Health System is a trusted health care resource for our region. In fact, we support all health care facilities in 14 Minnesota counties in preparing for and responding to community- or region-wide events. We also work closely with local and state public health agencies and city/county emergency management officials to ensure we are ready to respond to disasters.

CentraCare is a member of the Life Link III consortium that provides helicopter transport for critically ill or injured people. The flight team consists of a registered nurse, a paramedic and a pilot, all of whom have extensive training and experience. Three-person crews are on duty around the clock.

And when patients' needs are more routine than critical — back-to-school physicals, screening exams — we meet those needs. Our mission is to work to improve the health of every patient, every day. We are committed to providing care above all.



Photo courtesy of *St. Cloud Times*

we're here when you need us

caring for generations



Mark Larkin

CentraCare Health Foundation is grateful to the 5,083 benefactors who invested more than \$8.2 million in CentraCare Health System during the past year to improve health and health care — enabling life victories every day.

With the recent launch of our “Caring for Generations” capital campaign, we will continue to build our organization from the inside out — not to get bigger, but to get better — to enhance the delivery of medicine in this region and to care for generations to come.

Sincerely,

A handwritten signature in black ink that reads "Mark Larkin".

Mark Larkin, CFRE
Executive Director
CentraCare Health Foundation

A handwritten signature in black ink that reads "Barb Caspers".

Barb Caspers
Chair, Board of Directors
CentraCare Health Foundation



Barb Caspers

CentraCare Health Foundation Board of Directors - Executive Committee



Terry Pladson, MD



Nancy Ferche



Marilyn Obermiller



John Schmitz, MD



Chris Shorba



Loren Viere

CentraCare Health Foundation

Summary of Operations

FY 2010

Revenue & Support (in thousands)

*Contributions, net	\$6,341
Investment Income, net	\$2,420
Special Events	\$972
**Planned Giving Expectations	\$875

Total Revenue **\$10,608**

Expenses (in thousands)

Grants and Programs	\$2,546
Special Events	\$381
Administrative	\$738
Fund Raising/Capital Campaign	\$876

Total Expenses **\$4,541**

Net Assets at the end of the year **\$33,582**

* St. Cloud Hospital and St. Benedict's Senior Community covered a portion of the Foundation's administrative expenses. The number is reflected in the contribution line.

** Some planned gifts are revokable and may not materialize.

gifts of generosity

make all the difference

Generous gifts from the community make all the difference to the construction project at St. Cloud Hospital. Bob and Linda Feuling, owners of Westside Liquor stores, got the ball rolling in March 2009 by contributing \$1 million to the CentraCare Health Foundation to update and expand the Women & Children's Center. Two local business leaders since have joined them with significant gifts. John McDowall, president/CEO of McDowall Company, and his wife, Cherie, and Jim Christensen, CEO of J.C. Christensen and Associates, a business unit of Array Services Group, have contributed.

These business owners recognize the importance of offering the best care and the most advanced technology possible to the people in Central Minnesota.

"We know that our children and grandchildren as well as our employees will need the services at St. Cloud Hospital," Linda Feuling said. "We want the best services available right here in St. Cloud."

The McDowalls and Jim Christensen agree.

"It's amazing how St. Cloud Hospital has grown into this regional health care facility that is second to none," said John McDowall, a St. Cloud native. "Since the 1850s when the Benedictine nuns first arrived in St. Cloud, there has been a profound

devotion and unwavering faith to provide top-notch health care in Central Minnesota. I am proud to be a part of that heritage by helping to make St. Cloud Hospital a leading hospital in the state and in the nation."

"We depend on our employees and want them to be healthy and stay in the St. Cloud area," Christensen said. "Offering top-quality health care here gives them an incentive to stay."



The St. Cloud Hospital Women & Children's Center addition will:

- Double its size and increase capacity by adding 50,000 square feet;
- Provide larger private patient rooms with private baths in the Family Birthing Center;
- Provide single-family rooms in the Neonatal Intensive Care Unit (NICU);
- Provide a Respite Room for parents of NICU patients, giving parents an opportunity to stay with their babies, and to network and support each other.

The addition and renovation will be complete in 2013.

In 2009, the St. Cloud Hospital Women & Children's Center provided pediatric care for 1,986 children. There were 2,833 babies born in the Family Birthing Center, including 48 sets of twins and two sets of triplets. The NICU provided care for 340 infants.

Generous supporters Cherie and John McDowall, Jim Christensen and Linda and Bob Feuling.

leaving a lasting legacy

From the Boys & Girls Club of Central Minnesota to Clara's House to St. Cloud State University, George and Shirley Torrey of Cold Spring are well-known philanthropists. One common thread among most of the donations from the Torreys is that their gifts benefit children and young people. They care about the future of our community and leaving a legacy for children.

"Children, education and the needy are the biggest areas that we seem to give to," George said. "Children are the most important asset in our life. Education for children gets more important every day. And helping people less fortunate than ourselves is something we all should do."

Another way the Torreys chose to impact the future of our community is to include CentraCare Health Foundation in their will through the Beacon Society. "This is a great option for people who want to continue to help make a difference for future generations," George said. "You think about what you want to have your estate do after you die."

The Torreys decided to have part of their estate benefit four funds within the CentraCare Health System: Central Minnesota Heart Center, Coborn Cancer Center, Clara's House and CentraCare Diabetes Center.

"We're so fortunate to have a health organization such as CentraCare Health System in our area," George said. "We feel it's important to direct our estate giving to charity."



George and Shirley Torrey of Cold Spring

life is about giving back



Peggy Carlson and husband Chuck Nielsen of Lake Shore

Peggy Carlson can't tell her life's story without mentioning CentraCare. From being a frequent patient at St. Cloud Hospital as a child, to a teenager volunteering as a Candy Striper, from having children and grandchildren born at St. Cloud Hospital, to both her parents receiving care at the Central Minnesota Heart Center and now with her mother living at St. Benedict's Senior Community, every chapter of her life has been touched by CentraCare Health System. That is why Peggy is so passionate about giving back to the place that has been such an integral part of her life.

"Service in our family is like brushing your teeth, it's just a part of who we are," Peggy said. "My dad always said if you see a need and are able to meet it through a God-given gift — you step up and meet that need."

Peggy and husband, Chuck Nielsen, sponsored the children's playroom at the new Gorecki Guest House in honor of Chuck's mother, Cornelia Heile Nielsen, and aunt, Helen Heile Raymond. They also sponsored the porch in honor of Peggy's mother, Blanche Carlson. But nothing is more important to them than tending to the hearts and lives of children. That is why they are actively involved with Clara's House "Clara's House gives kids the skills needed to cope with their unique issues," Peggy said.

By living through example, Peggy and Chuck strive to be role models for their grandkids. This includes continuing the legacy of service through philanthropy by naming CentraCare Health Foundation as a beneficiary in their estate. "We want our estate plan to reflect the way we live," Peggy said. "We want it to be about hope."

CentraCare Health Foundation engages the philanthropic community in partnership to improve health and health care.

If you are interested in making a gift to CentraCare Health Foundation, please call (320) 240-2810, e-mail foundation@centracare.com or visit www.centracare.com.



Gary and Jane Marsden of St. Cloud

Through the years, Gary and Jane Marsden have been connected to CentraCare Health System in many ways. As a past board member for St. Cloud Hospital and CentraCare Clinic and current board member for CentraCare Health System, Gary has been involved for 15 years in many of the behind-the-scenes decisions which helped to shape the significant growth, change and specialization in the area's health care.

Jane also has been very involved as a long-time volunteer for CentraCare Clinic – River Campus, Hospice and Holly Ball. More recently, however, her health care experience has been a very personal one with a breast cancer diagnosis in 2007 and a heart condition in 2008.

“Being on the receiving side of health care, I was so impressed with the quality of care provided by CentraCare in both instances,” Jane said. “My health care experiences have been very positive.”

The Marsdens recognize this first-class health care as an integral part of the community and realize that additional dollars are needed for CentraCare to continue to meet the area's growing health care needs. That is why they have chosen the CentraCare Health Foundation as a partial beneficiary of their estate.

“We believe that preventive health care is the future of medicine, and we support CentraCare's ongoing efforts to serve the region's health care needs,” Gary said. “We would love to see Central Minnesota recognized as the healthiest area in the United States, but it will take more community support to make it happen.”

preventive health care
is the future

CUMULATIVE BENEFACTORS

The persons, foundations
and corporations listed here
have achieved a lifetime giving
level of \$10,000 or more.

We are truly grateful to our
benefactors and make every
effort to list them as they
prefer. Please call (320)
240-2810 to correct any errors
or discrepancies that may
appear in the following lists.

(Donors listed as of Aug. 25, 2010)

\$2,500,000+

The Coborn Family
Benedict F.
& Dorothy J. Gorecki
St. Cloud Hospital

\$1,000,000+

Central Minnesota Community
Foundation Donor
Advised Funds
Clearway MN
Ms. Mae Ellingson-Skalicky
Robert J. & Linda D. Feuling
Grocers On the Green
St. Cloud Hospital Auxiliary
United Way
of Central Minnesota
John & Mary Weitzel

\$500,000+

Darwin
& Rose Mary[†] Bonn
Bob & Nancy Ferche Family
The Kresge Foundation
State of Minnesota
Department of Health
Gene & Sheelah Windfeldt

\$250,000+

Anderson Trucking Service, Inc.
Blue Cross and Blue Shield
of Minnesota
William E. Clemens
Crothall Services Group
Patrick E. Lynch
John M. Mahowald, MD
& Donna M. Kuhl
Dr. John K.
& Joyce A. Matsuura
John & Cherie McDowall -
McDowall Company
McGough Companies
Otto Bremer Foundation
St. Benedict's
Senior Community
George B. & Shirley J. Torrey

\$100,000+

Michael & Sharon Bauerly
Family Fund
Bernick's
Douglas J. & Tanya R. Boser -
Boser Construction
CentraCare Clinic
Central Minnesota
Emergency Physicians
Design Electrical
Contractors Inc.
Paul & Joanne Dorsher
John & Nancy Frobenius
Gannett Foundation
Harold E. Anderson Trust
Leo T. Henkemeyer
Hughes Mathews, P.A.
J.C. Christensen
& Associates, Inc.
Sy & Corrine Janochoski -
Sy & Sons, Inc.
Knife River/MDU Foundation
Al & Yvonne Kremers

Leighton Broadcasting
Radio Stations KCLD,
KZPK, KCML, KNSI
Cheryl Lightle & Wade Skaja
Mahowald Insurance Agency
& Mahowald Financial
Partners
Marco
Medica Foundation
Dr. Paul T. & Nancy E. Moran
Kay Pattison
Dr. Terence R. & Sue Pladson
Barry & Sandy Ross
Leo M. & Karen M. Sand
Tom & Joyce Schlough
Bob & Sandy Sexton
Christopher Shorba
Sprint PCS
St. Jude Medical
Tastefully Simple
The Clara Foundation
Jerome & Esther Then
U-Care
University of Minnesota
Academic Health Center
Viking Coca-Cola
Wells Fargo Bank
Wolters Kluwer
Financial Services

\$50,000+

Gail Anderson
Array Services Group
Vonnice Bangton
Boston Scientific Corporation
Bremer
Craig & Karen Broman
Carl & Barb Caspers
The Carlson Family
& C & L Distributing
Child Care Choices, Inc.
Cold Spring Granite Company

Cornerstone Construction, Inc.
& Walking Billboards
Creative Memories/
The Antioch Company
Crystal Farms
Donlar Construction Company
Charles & Jane Dooley
Donna M. Eickhoff
Lester Engel
Fraternal Order of Eagles
Gold'n Plump Poultry
Gray Plant Mooty
Don & Angeline Hall Family
Allen & Laura Horn
Kevin J. & Joanne M. Hughes
Ray Hughes
James H. & Mary Lee Illies
J.P. Morgan Securities, Inc.
Karen & Jerry Jurgens
Kemps
LarsonAllen LLP
The Lynn Johnson
Family Foundation
John P. & Maryanne Mahowald
Steve & Trese Mareck
Gary & Jane Marsden
Tom E. & Mary Mathews
Dan & Susan Miller -
Miller Architects & Builders
Jim & Marion Miller
Jim Nahan
Robert & Marilyn Obermiller
Pan-O-Gold Baking Co.
PCL Construction Services, Inc.
Regional Diagnostic Radiology
Dr. Nicholas & Bernice Reuter
Denny & Karol Ringsmuth
Rinke-Noonan Law Firm
Mike & Elizabeth Roth
Russ Davis Wholesale
Sisters of the Order
of Saint Benedict

St. Cloud Lions Club
St. Cloud Truck Sales, Inc.
Stearns Benton Medical Society
Dr. Wesley J. & Jean A. Streed
Supervalu, Inc.
Kathy & Tom Terhaar
Then Family
Charitable Foundation
Tony & Joyce Tillemans
Traumen Glasberg
Design Studios
Delphine[†]
& John Undersander Family
US Bank
Bob & Penny White
Dr. Daniel & Judy Whitlock
Diane M.
& John J.[†] Wojtanowicz
Dennis & Karen Zaun

\$25,000+

Jack & Janie Amundson
Audio Video Extremes LLC
David & Jean Bauerly Family
Jerry & Elaine Bauerly
Benton County
Don & Pat Bitzan
Dick & Mimi Bitzan
Payton Blomstrom Perinatal
& Pediatrics Palliative
Care Fund
Tom & Andrea Brasel
Charles D. Nielsen
& Peggy L. Carlson
Center For Diagnostic Imaging
Linda & Joseph Chmielewski
John P. & Cindy B. Clemens
Cold Spring Electric
Services, Inc.
Continental Press, Inc.
Courrier Investments LLC
Dr. & Mrs. Stephen Cragle

D.J. Bitzan Jewelers
Jim & Janet Davis
DeZurik
Mark & Karla Donlin
Dr. & Mrs. Michael J. Dorle
Roger & Betty Duinink
Dr. Walter N. & Trecia A. Ellis
Dr. Frederic J. & Lynn Engman
Epic Systems
Dr. Jason M. & Debra Erickson
Fifth District Eagles
Fidelity Charitable Gift Fund
Arthur & Barbara Grachek
Sylvester & Jacquelyn Haehn
Lee & Jan Hanson
Drs. Ronald D.
& Michelle Hanson
Dr. Richard W. & Patricia Hart
Judge Elizabeth Hayden
& Judge Charles Flinn, Jr.
HealthPartners
Central Minnesota Clinics
Joe & Amy K. Hellie
Joan Hicks
Andy & Carol Hilger
Holiday Inn Hotel & Suites
Dennis & Tammy Holland
Dr. Mark D. Holm
& Susie Osaki Holm
Beth & Ken Honkomp
Nicholas & Terese Houle
Dr. Scot & Gretchen Hutton
Alcuin and Dorine[†] Illies
Dr. Dwight E. & Audrey Jaeger
Marion D. Jagielski
Mary Lou Jameson
Jennie-O-Turkey Store, Inc.
Dr. James L. & Mary Jost
Don & Rita Kainz
Kiwanis Club of St. Cloud
Steve Klick
Greg & Sue Klugherz

Laerdahl Foundation
Lakeland Construction
Finance, LLC
Lamar Outdoor Advertising
Mark & Judi Larkin
Jim & Mary Jane Lauerman -
American Family Insurance
Leonard, Street and Deinar
Hubert Levandowski
& Karol Moorman
Dr. Douglas R.
& Taimi T. Liepert
Macy's
Dr. Todd D. & Sarah Magnuson
Norie Mahowald
Mardag Foundation
Edward "Chip" Martin
& William Chaffee
Mathew Hall Lumber Company
Drs. Eric T.
& Lynn M. McFarling
The Medtronic Foundation
Thomas & Dr. Cindy Melloy
Gordy & Michelle Meyer
Midsota Plastic
& Reconstructive Surgeons, PA
Midwest Arrhythmia
Research Fund
Mark J. & Jan I. Murphy
Dr. Benjamin & Kari Nemeth
Novartis Pharmaceuticals
Corporation
Perkins & Will
Kris Peterson & Sue Haller
Pfizer Inc.
Mary & David Phipps
Pleasureland RV Center, Inc.
Durand J. & Mary Sue Potter
Quinlivan & Hughes, P.A.
Duane & Joni Rasmusson
RBC Wealth Management

Dr. John R.
& Kathryn A. Reisinger
Robert & Rita Rengel
Dr. David J.
& Susan M. Roberts
Kristine A.
Cunningham-Rose[†]
Claude C.
& Mary A. Schneider
John Seckinger
Michael & Patricia Sipe
Slumberland Furniture
of St. Cloud
Mary K. Sommers
St. Cloud Hospital School
of Nursing Alumni Association
Scott & Shelly Streed
Todd & Heidi Streed
Louise E. Theisen
David & Janet Tilstra
Lee & Mary Torborg
Dr. Theodore & Andrea Truitt
Joan B. Volkmuth
W. Gohman Construction Co.
Walgreens/Option Care
Donald R. & Jan D. Watkins
Don & Sylvia Weeres
Alice M. Wick
Williams/Integracare Clinic
Dr. Harold E.
& Shirley Windschitl
Winkelman Building
Corporation
Xcel Energy
Dr. Mohamed S. Yassin

\$10,000+
Abbott Lab
Acosta
Adult & Pediatric Urology
Advantage Sales

Dr. Oluade A.
& Adeyoola A. Ajayi
Hani Alkhatib
Thomas & Sally Allen
American Cancer Society
Drs. Stacia Anderson
& Matthew R. Hwang
Drs. Robert Ang
& Belen Dy
Anheuser Busch
Appert's Foodservice
Artic Glacier
Larry L. Asplin
AstraZeneca
Drs. Angelina Ausban
& Kevin Smith
Aventis Pharmaceuticals
Dr. Richard
& Michaela Backes
Barrel O' Fun
Roberta D. & Kevin Basol
Patrick C. Bauer
& Gloria A. Flavin Bauer
Brian & Marge Bauerly
Mark & Anita Bauerly
Rick & Helga Bauerly
Penny L. & Dennis L. Beattie
Dorothy Becker
Mary Bell
Michael S. & Gerry Beltinck
Dean R. & Lori J. Bernick
Kirstie & Peter Bingham
Dr. Joseph M. & Patty Blonski
Bluestem Brands Inc.
Drs. Steven H.
& Barbara J. Bollinger
Bonnie & Stephen Bologna
David & Sharon Borgert
Bor-Son Construction, Inc.
Jon C. Bowar
Phil & Kris Boyle

Dr. Bryan J.
& Kirsten H. Brindley
Dr. Frank & Alice Brown
Mary Buhl
Barbara & David Burandt
Laura Burns
Bush Foundation
BWW Sales, Inc.
Roger & Sue Cada
Cameron's Gourmet Coffee
Gregory & Heidi Campbell
Dr. Dennis & Jeanne Carreras
Carson Pirie Scott Foundation
Catholic Foundation
of the Diocese of St. Cloud
Central Minnesota Noon
Optimist Club
Certified Hereford Beef
College of Saint Benedict
Dr. Thomas H.
& Paulette M. Como
Adeline L. Conlon
Dee Coppock
Dr. Thomas L.
& Mary M. Cress
Patty Cumming
Craig & Lynn Dahl
Eileen Dauer, MD
Dayton Foundation
Del Monte Foods
Diane Deters
Ann & Alex[†] Didier
Colleen & Gerry[†] Donlin
Donlin Company
Larry & Rita Donlin
Jyeton Drayna
Debra A. Eisenstadt
Dr. Rene & Milady Eldidy
Eli Lilly and Company
Dr. Hans H.
& Sharon L. Engman
Wayne R. & Linda J. Engstrand

Estate of Irene Madigan
Estate of Mary Jean Schlegel
Rose Ann Faber
John & Gail M. Falconer
Dr. Michael C.
& Kendra Flanagan
James & Wanda Forsting
Frito Lay
Dr. John H. & Jeanne M. Geiser
General Mills Foundation
Drs. Jeffrey S. & Terri T. Gerdes
Christy Gilleland -
Gilleland Chevrolet-Cadillac
GlaxoSmithKline
Great River Federal
Credit Union
Kay & Doug Greenlee
Frank† & Dolores Grundman
James & Pauline Hall
Hammel, Green
& Abrahamson, Inc.
Dr. Albert S.
& Janice Hammond
Mr. Paul N. & Michele Hanson
Drs. Chad A.
& Sheri Haroldson
Paul & Jennifer Harris
Mark Hauge
Donald Helgeson
& Sue Shepard
Miike & Pat Henkemeyer
G.R. Herberger's, Inc.
Dr. James S.
& Evelyn Hernandez
Drs. H. Thomas
& Kathleen Hobday
Holiday Companies
Drs. Weining Hu & Yi Zheng
Brenda & Matt Hulst
Imagine Nation Books, LTD
Initiative Foundation

J & B Group
Dr. Craig M.
& LuAnne Johnson
Cindy Johnson
Bob & Judy Johnson
Sandra L. & Jim Johnson
Drs. Richard
& Merryn R. Jolkovsky
Donald
& Angelica Jurgens
Edna M. Kamer
Jean C. Kane
Terry A. & Barb Kantor
Dr. Barbi Kaplan-Frenkel
& Theodor Frenkel
Michael & Joni Karl
Dale Kaufman
Drs. Mary & Jerry Keating
Rob & Joanne Keck
June Kelly
Kern DeWenter Viere, Ltd.
Ronald L. Kershner
Jim & Janet Knoblach
Larry A. & Brenda Knutson
Kopp Family Foundation
Kopp Investment Advisors
Todd & Laura Kor
Naomi Kowalik
Kraft Foods
Dr. David A. & Susan Kroska
Rebecca J. & Miles Kulzer
William J. & Phyllis M. Lacroix
Jerry & Bev Timmers Lahr
Henri & Pat Lanctin
Dr. Lanse C. & Livia Lang
Margaret Jean Lange
David Larson
Dr. Theresa M. & John Lau
Catherine A.
& Edward J. Laubach

Dr. Elaina Lee
Yvonne L. & Michael L.
Leedahl
John & Arlene Leisen
Dr. Thomas W.
& Deanne Leither
Mike & Cathrine I. Lensing
Mr. & Mrs. Mike Lepinski
Steven Letnes
Aaron and Jill Levin
Mary J. & Michael Leyk
Lumber One, Avon Inc.
Jim & Vicki Lundeen
Jim & Christine Mahowald
Samuel G. & JoAnn M. Mairs
Marigold Foods Inc.
Nancy & Erich Martens
Dr. Creston M.
& Bonnie Martin
Dr. Mark J. & Lisa B. Martone
Mike Mavetz
& Mary Beth Schmitt
Scott & Mary Kay May
MCI Carpet One
Melrose Lions Club
Merck & Co., Inc.
Merrill Corporation
Roy J. & Ruth Meyer
Robert P. & Debra A. Miller
Dr. Simon & Renee Milstein
Drs. Dale J. Minnerath
& Sylvia Sundberg
Andre' Mitchell
Rosie & Roger Moran
Mr. Dee's Inc.
Tracy E. Napp, MD
Dr. Frank P. & Tracy Nellans
Peter & Laurie Nelson
Myrel A. Nemann
& Midwest Vision Centers
Dr. Robert B.

& Marianne Nemeth
Joe & Veronica Nessler
Carolyn & Bruce Neubauer
Lori Neutzling
Hoang Nguyen, MD
& Regional Diagnostic
Radiology
Old Dutch Foods, Inc.
Judith M. Ozbun
Kathleen M. & Jim Parsons
Drs. Ted & Jane Peterson
Phelps Dodge Foundation
Brett & Jon Pinkerton
Joy M. & Patrick A. Plamann
Plaza Park Bank
Amy M. Porwoll
Prestige Parking & Valet
John D.
& Shannon J. Quinlivan
Doug†
& Stephanie Randolph
Dr. Jodi Regan & Dean Moritz
Rice Building Systems, Inc.
Dr. William & Millie Rice
Aleen & Rick Roehl
Deacon Jerome Roth
Vickie & Al Ruegemer
Gregory O. & Carol J. Rupp
Juli & John Sanner
Dr. Thomas J.
& Cheryl J.K. Satre
Scheels All Sports
Barb & Dale Scheiber
Jane Scherber
Armella Schimnich
James & Joan Schlenner -
Schlenner, Wenner & Co.
Judith C. Schmid
Amy & John Schmitz
John & Jan Schnettler
Dr. Thomas G.

& Myra Lee Schrup
Dr. Timothy N.
& Amy Schuchard
Tracy & Joe Schulte
St. Cloud Westside
Sertoma Club
Jerry Setten
Father Ambrose Siebenand
Tereasa Simonson MD -
Regional Diagnostic
Radiology
SJA Architects
Joel & Jennifer Spalding
Drs. Kim & Chad Spaulding
Spee Dee Delivery Service, Inc.
Kevin & Anita Spellacy
Steve & Jean Sperl
St. Cloud Country Club
St. Cloud Ear Nose & Throat -
Head & Neck Clinic, PA
St. Cloud Medical Group
The St. Cloud Morning
Optimist Club
St. Cloud Orthopedic
Associates, Ltd.
St. Cloud Sertoma Club
St. Cloud Surgical Center
St. Cloud Technical College
St. John's University Foundation
State Farm Insurance
Stearns County
Dr. Michael & Nina Steil
Paul W. Steil
& Elizabeth Wenner Steil
Todd & Cindy Steinke
Mary A. Stiles
Helen R. & M. Thomas Stoen
Strack Companies
Terry & Dr. Janelle K. Strom
Mary A. Struffert
Debra D. & Donald H. Stueve

Dr. Pradub & Rampai Sukhum
Dr. Read & Tammy Sulik
Mary & Donald Super
Dan Swenson
Take Heart America
Sudden Cardiac Arrest
Survival Initiative
Dr. John Teskey
& Kathleen Mahon
The Change Companies
The Coca-Cola
Bottlers' Foundation
The Saint Paul Foundation
The Schwab Fund
For Charitable Giving
Marie Thompson
Kelly J. Thomson
Bob & Joann Thueringer
Dr. Daniel J. & Julie S. Tiede
Traut Wells
Amy Trutwin
Vern & Marlene Tschida
Urban Associates, Inc.
Dr. Paul E. Van Gorp
& Roberta M. Knutson
Phil & Kay Vander Stoep
Dr. Roderick D.
& Amy Vansurksun
Vascular Solutions
Verso Paper
Veterans of Foreign Wars
East Side Post 4847
Loren M. & Debra J. Viere
Dr. Steve M. & Joan C. Vincent
Jane E. & Mark D. Vortherms
Sharlene & Jerry Wallack
Patrick & Gwen Wampach
Shirley Ann Wampach
Dr. Dove D.
& Tracey L. Watkin
Hugo B. & Rita M. Weyrens
Brad & Kathy Wheelock

Margaret & Michael White
Dr. Darin D. & Katy Willardsen
Williams-Dingmann
Funeral Homes
Wyeth-Ayerst Pharmaceuticals
Edward J. Zapp
Daryl L. & Bonnie G. Zimmer
Dr. Howard J.
& Carolyn Zimring
Sonja & Steven Zitur
Zonta Club of St. Cloud

Deceased†

BEACON SOCIETY
The following benefactors
have named St. Cloud Hospital
programs and services,
St. Benedict's Senior
Community or CentraCare
Health Foundation as a partial
beneficiary of their estates.

Dr. Hani S.
& Majedah Alkhatib
Larry L. Asplin
Ernest J. & Eileen A. Bergeron
Dick & Mimi Bitzan
Darwin & Rose Mary† Bonn
Peggy Carlson & Chuck Nielsen
William E. Clemens
Dan & Mabel Coborn
Adeline L. Conlon
Colleen & Gerry† Donlin
Lester Engel
Dr. Hans H.
& Sharon L. Engman
Wayne R. & Linda J. Engstrand
Eugene & Jan Faulhaber
John & Nancy Frobenius
Benedict F.
& Dorothy J. Gorecki

Arthur & Barbara Grachek
Brad & Lisa Hanson
Jack & Geri Happe
Marie R. Hennen
Joan Hicks
Marion D. Jagielski
Bernadette R. Jagielski†
Drs. Richard
& Merryn R. Jolkovsky
Jean C. Kane
Naomi Kowalik
Tom & Helen Krebsbach
Al & Yvonne Kremers
Ann M. Landwehr
Steve Letnes
Dr. Douglas R.
& Taimi T. Liepert
Reverend Eugene
& Kitti Lindusky
Lloyd E.† & Elaine C. Luckman
Charlene M. Maehren
Norie Mahowald
Gary & Jane Marsden
Betty Maurstad
Scott & Mary Kay May
Thomas & Dr. Cindy Melloy
Math & Katie Mimbach
Dr. Chris K.
& Denise Moellentine
Rosie & Roger Moran
Eleanor Hemstreet Nickles
& William Nickles
Judith M. Ozbun
Kay Pattison
Kris Peterson & Sue Haller
Dr. Terence R. & Sue Pladson
Daniel Purcell
Alma E. Rau
Dr. Nicholas F.
& Bernice M. Reuter
Denny & Karol Ringsmuth
Richard B. Ruhoff

Marilyn A. Savage
Tom & Joyce Schlough
Jacqueline M. Schuh
in memory of Joan M. Schuh
Bob & Sandy Sexton
Father Ambrose Siebenand
Michael & Patricia Sipe
Judge John A. Spellacy
Todd & Cindy Steinke
Dr. Wesley J. & Jean A. Streed
M.J. & Richard Swanson
Louise E. Theisen
George B. & Shirley J. Torrey
Arlene Truszinski
Hugo B. & Rita M. Weyrens

Deceased†

NAMED FUNDS
These endowment funds have
been created by individuals
to carry on their family name
or to honor someone special
to them. The principle of these
gifts is invested and the
interest is used to support the
area designated by the
benefactor.

Al & Yvonne Kremers Fund
Al Kremers Fund
for Behavioral Health
Alcuin & Dorine Illies Fund
Almeda Ella Polish Fund
Anna & Gracie Fund
Arthur F.
& Barbara A. Grachek Fund
Aunt Leona Fund
Bernie Belling Recovery Fund
Bill & Jean Kane Fund
Boser Family Fund
Broker Family Fund

Carl & Marilyn Savage Fund
Clara's Fund
Craig & Lynn Dahl Fund
Darwin
& Rose Mary Bonn Fund
Dr. Fred & Lynn Engman Fund
Dr. Hans Engman
Diabetes Fund
Dr. Harold E. Windschitl
Cancer Research
Dr. Nicholas
& Bernice Reuter Fund
Dr. Philip Halenbeck Education
Dr. Richard
& Patricia Hart Fund
Dr. Robert Cumming
Family Practice
Elizabeth Hayden
& Charles Flinn, Jr. Fund
Fabian & Donna Eickhoff
Family Fund
Fred & Del Sexton Fund
Fred M. Riegger Fund
Gene &
Sheelah Windfeldt Fund
George & Shirley Torrey Fund
George J. McDowall
Memorial Fund
Greater MN Fight
for a Cure Fund
Hank & Dee Coppock Fund
Helen Liljedahl Fund
Herman Hollar
Memorial Scholarship Fund
Hind Site Fund
Irene Walsh Fund
Jagielski Family Fund
Jake & Mary Essen Alzheimer's
Education Fund
James & Helen Nahan
Family Fund



Cindy Jensen Melloy, MD

CentraCare Clinic –
Women & Children

“St. Cloud Hospital is a thriving regional medical center that touches so many lives in Central Minnesota,” said Cindy Jensen Melloy, MD, a pediatrician at CentraCare

Clinic – Women & Children. “Financial support of any kind can make all the difference to ensure that those services are sustained and continue to improve and expand.”

Dr. Melloy began practice at CentraCare Clinic – Women & Children 22 years ago. She knows the difficulties associated with receiving specialized medical care when it isn’t offered in the community. Twenty years ago, her son was diagnosed with leukemia.

“We received excellent care in St. Cloud,” she said. “However, my son needed pediatric oncology services which weren’t offered in St. Cloud at that time. We traveled to the Cities three times a week for his care and learned firsthand how important it is to have quality medical care close to home.”

Dr. Melloy’s son was able to beat cancer and today lives a healthy life.

Because of Dr. Melloy’s motivation to provide superior patient care close to home, she started a pediatric oncology program. “With the generosity of the community and support from CentraCare Health System, we are able to provide a specialized service,” she said. “The Grocers on the Green golf fundraiser has raised more than \$1 million since 2002 for the Pediatric Oncology Program. It is great that the community has been so generous.”

Dr. Melloy is excited about the future well baby nursery in the Family Birthing Center included in the hospital expansion project. “All pediatricians in the community made donations to make the nursery possible,” she said. “It will touch the entire community and that’s invaluable.”

Jean Kershner
Lung Cancer Fund
John & Delphine
Undersander Fund
John & Nancy Frobenius
Breast Cancer Fund
Joseph J. & Susan M. Kuhl
Heart Center Fund
Karla & Mark Donlin Fund
Kay Pattison Fund
Kidney Klimb Fund
Knevel Family Fund
Kristine Cunningham Rose
Memorial Fund
Lee & Mary Torborg
Spiritual Care Fund
Leonard &
Catherine Horn Fund
Liepert Family Fund
Lillian’s Garden Fund
Louise E. Theisen Fund
Madigan/Mosford
Family Fund
Marco Health Fund
Mark D. Holm
& Susie Osaki Holm
Research Fund
McDowall Company,
John & Cherie
McDowall Fund
Michael & Bobbi
Dorle Fund
Mike & Joni Karl
Family Fund
Nemeth Family Fund
Nicolas & Terese
Houle Fund
Pat Opatz Cancer Research
Paul & Joanne
Dorsher Fund
Paul T. & Nancy E.
Moran Fund

Peggy L. Carlson -
Charles D. Nielsen
Hope Fund
Quinlivan & Hughes Fund
Richard &
Merryn R. Jolkovsky Fund
Robert & Nancy Ferche
Family Fund
Robert Mahowald
Sr. Fund
Rosalie Timmers Junior
Volunteer Scholarship
Rose Mary Bonn
Garden Fund
Sallie Engel Trauma
Survivor’s Education Fund
Sam Ellis Fund
St. Cloud Hospital
School of Nursing
Alumni Scholarship
Sev & Ruth Koop Fund
Streed Family Cleft
& Craniofacial Fund
Sue & Terry Pladson Fund
Sy & Corrine Janochoski
Donor Advised
Wayne & Hazel Bonn
Memorial Fund
Weitzel Family Fund
William J. Held
Memorial Scholarship
Wojtanowicz Family Fund
Yvonne Obermiller Kremers
Nursing Scholarship

CADUCEUS SOCIETY
The Caduceus Society
is a philanthropic guild
of CentraCare Health
Foundation. It is open
to practicing and retired
Medical Staff who make a
commitment of \$10,000
or more to support the
Foundation’s mission
of improving health
and health care.

Dr. Oluade A.
& Adeyoola A. Ajayi
Dr. Hani S.
& Majedah Alkhatib
Drs. Robert Ang
& Belen Dy
Drs. Kevin Smith
& Angelina Ausban
Dr. Richard
& Michaela Backes
Dr. Joseph M.
& Patty Blonski
Drs. Steven H.
& Barbara J. Bollinger
Dr. Stephen M.
& Bonnie Bologna
Dr. Jon C. & Barb Bowar
Dr. Philip F.
& Kristine Boyle
Dr. Bryan J.
& Kirsten H. Brindley
Dr. Frank & Alice Brown
Dr. Dennis
& Jeanne Carreras
Dr. Thomas H.
& Paulette M. Como
Dr. Stephen P.
& Beth Cragle

Dr. Thomas L.
& Mary M. Cress
Patricia Cumming
Dr. Eileen Dauer
Dr. Michael J.
& Roberta L. Dorle
Dr. Paul J. & Joanne Dorsher
Dr. Rene & Milady Eldidy
Dr. Walter N.
& Trecia Ann Ellis
Dr. Hans H.
& Sharon L. Engman
Dr. Frederic J. & Lynn Engman
Dr. Jason M. & Debra Erickson
Dr. Michael C.
& Kendra Flanagan
Dr. John H. & Jeanne M. Geiser
Drs. Jeffrey S. & Terri T. Gerdes
Dr. Albert S.
& Janice Hammond
Drs. Ronald D.
& Michelle Hanson
Drs. Chad A.
& Sheri Haroldson
Dr. Richard W.
& Patricia Hart
Dr. Mark D.
& Joanne C. Hauge
Drs. H. Thomas
& Kathleen Hobday
Dr. Mark D.
& Susan Osaki Holm
Dr. Allen & Laura Horn
Drs. Weining Hu & Yi Zheng
Dr. Scot W. & Gretchen Hutton
Drs. Matthew Hwang
& Stacia Anderson
Dr. Dwight E. & Audrey Jaeger
Dr. Craig M.
& LuAnne Johnson
Drs. Richard
& Merryn R. Jolkovsky

Dr. James L. & Mary Jost
Dr. Donald J.
& Angelica Jurgens
Dr. Gerald L. & Karen Jurgens
Dr. Barbi Kaplan-Frenkel
& Theodor Frenkel
Drs. Jerome P.
& Mary U. Keating
Dr. Robert J. & Joanne Keck
June Kelly
Dr. Todd M. & Laura Kor
Dr. David A. & Susan Kroska
Dr. Henri P. & Patricia Lanctin
Dr. Lanse C. & Livia Lang
Dr. Theresa M. & John Lau
Dr. Elaina Lee
Dr. Thomas W.
& Deanne Leither
Dr. Douglas R.
& Taimi T. Liepert
Dr. James W. & Vicki Lundeen
Dr. Todd D. & Sarah Magnuson
Dr. John Mahowald
& Donna Kuhl
Dr. Creston M.
& Bonnie Martin
Dr. Edward "Chip" Martin
& William Chaffee
Dr. Mark J. & Lisa B. Martone
Dr. John & Joyce Matsuura
Drs. Eric T.
& Lynn M. McFarling
Dr. Cindy J.
& Thomas P. Melloy
Dr. Simon & Renee Milstein
Drs. Dale J. Minnerath
& Sylvia R. Sundberg
Dr. Andre' L. Mitchell
Dr. Chris K.
& Denise Moellentine
Dr. Paul T. & Nancy E. Moran
Dr. Tracy E. Napp

Dr. Frank P. & Tracy Nellans
Dr. Peter E. & Laurie Nelson
Dr. Joseph P. & Veronica Nessler
Drs. Hoang Nguyen
& Nhan Quyen
Drs. Theodore A.
& Jane M. Peterson
Dr. Brett A.
& Jonathan Pinkerton
Dr. Terence R. & Sue Pladson
Dr. Jodi K. Regan
& Dean Moritz
Dr. John R.
& Kathryn A. Reisinger
Dr. Nicholas & Bernice Reuter
Dr. William & Millie Rice
Dr. David J.
& Susan M. Roberts
Dr. Thomas J.
& Cheryl J.K. Satre
Dr. John M. & Amy Schmitz
Dr. Thomas G.
& Myra Lee Schrup
Dr. Timothy N.
& Amy Schuchard
Dr. Tereasa & Eric Simonson
Dr. David & Jill Smith
Mary Sommers
Dr. Joel P. & Jenny Spalding
Drs. Kimberly W.
& Chad Spaulding
Dr. Michael & Nina Steil
Dr. Mary A. Stiles
Dr. Wesley J. & Jean A. Streed
Dr. Janelle K. & Terry D. Strom
Dr. Pradub & Rampai Sukhum
Dr. Read & Tammy Sulik
Dr. John Teskey
& Kathleen Mahon
Dr. Daniel J. & Julie S. Tiede
Dr. David J. & Janet S. Tilstra

Dr. Theodore O.
& Andrea B. Truitt
Dr. Paul E. Van Gorp
& Roberta M. Knutson
Dr. Philip H.
& Kay Vander Stoep
Dr. Roderick D.
& Amy Vansurksum
Dr. Dove D.
& Tracey L. Watkin
Dr. Daniel J.
& Judy A. Whitlock
Dr. Darin D. & Katy Willardsen
Dr. Harold E.
& Shirley Windschitl
Dr. Thomas L.
& Judith A. Wyne
Dr. Mohamed S. Yassin
Dr. Howard J.
& Carolyn Zimring
Anonymous (1)

EMPLOYEE CAMPAIGN
These CentraCare Health
System employees participated
in the 2010 Employee
Campaign, listed
alphabetically by giving level.

90-Minute LEADERS
Employees committed
to 90-minutes per pay period

Tom & Sally Allen
Larry L. Asplin
Roberta Basol
Charity Beattie
Penny L. &
Dennis L. Beattie
Kirstie & Peter Bingham
Carla Biniek
Sharon Blaskowski

David & Sharon Borgert
Tom & Andrea Brasel
Craig & Karen Broman
Laura Burns
Greg & Heidi Campbell
Jennifer Capretz
Dee Coppock
Marlene Deboer
Karla & Mark Donlin
Charles & Jane Dooley
Lisa M. Dorsch
Mary E. Dwyer
Deb Eisenstadt
Donna Gasperlin
Judy Gilsdorf-Gracie
Marty Halvorson
Joe & Amy Hellie
Ken & Beth Honkomp
Allen & Laura Horn
Cynthia L. Johnson
Terry & Barb Kantor
Susan Kerfeld
Heather Kick
Peggy J. King
Sue & Greg Klugherz
Luan Knoll
Aaron & Lisa Lahr Family
Miriam Lalum
Mark & Judi Larkin
David Larson
Cathy Lensing
Mr. & Mrs. Mike Lepinski
Mary & Michael Leyk
Tracey & Craig Lindberg
Tami Luark
Jim & Chris Mahowald
Diane Marcotte
Darla & Brian Mergen
Abby Miller
Robert & Debra Miller
Rosie & Roger Moran
Gwen Muehring



Dave Larson

Facility Management director

Dave Larson was born at St. Cloud Hospital but hadn't been back until he was hired two years ago as the hospital's facility management director who, as one of his duties, oversees the construction project.

How ironic that the very place he was born is the place that he is now helping to expand.

Dave was immediately impressed by St. Cloud Hospital when, as a new employee, he participated in the required orientation program. "I have never worked at a place that teaches its new employees so much about the organization," he said. "Not only did I learn about the organization and what it does, but I also learned about the history and mission of St. Cloud Hospital. I liked what I heard and walked out of there proud to be a part of this great organization."

Today, Dave is still a proud St. Cloud Hospital employee — so proud that he increased his support to the CentraCare Health Foundation's Employee Campaign. "I enjoy the opportunities that I have been given working here," he said. "It's a good way for me to give back to an organization that makes me feel valued and respected. I have never been more proud to work for an organization. And because I am so involved in the expansion project, I get to see right before my eyes every day what my dollars are doing to make this expansion a reality."

Mark & Jan Murphy
Jim & Janice Netterfield
Jill Oechsle
Marlene V. Olson
Kathy & Jim Parsons
Kris Peterson & Sue Haller
Sally Petrowski
Mary & David Phipps
Dr. Terry & Sue Pladson
Patrick & Joy Plamann
Melanie & Tom Rau
Aleen Roehl
Jodi Rohe
Vickie Ruegemer
Juli Sanner
John & Jan Schnettler
Ken & Marcia Shane
Todd & Cindy Steinke
Melissa R. Stevens
Sam & Allison Stone
Daniel Swenson
Melissa & Joel Torborg
Shar & Jerry Wallack
Lana Weber
Sonja Zitur

2 Anonymous Leaders

60-Minute STEWARDS Employees committed to 60-minutes per pay period

Anisa Abdille
Linda Abel
Amy D. Allen
Kimberly Asmus
Bette Bakke
Lisa Baron
Mary Bell
Sue Bewley
Michael Borell
Juli Brackett

Irene Braun
Sue Brixius
Julie Butkowski
Sheila Campbell
Cynthia Christianson
Carolynn Clement
Joni Costello
Jim & Jan Davis
Jeanne
& Dave DelZoppo
Diane J. Deters
April J. Doten
Shannon Durkee
Joseph Ellerbusch
Gail Falconer
Miriah Fincher
Gary Goerger
Genell Goerger
Dawn Graves
Doug & Kay Greenlee
Donna & Tom Gregory
Andria Gutormson
Rachel Haaland
Steven
& Aurelia Harlow
Randy Harren
Paul & Jennifer Harris
Bonnie Hickey
Kacey L. Hiltner
Mary Janski
Jim Jaster
Jim & Sandy Johnson
Angela Jordahl
Sue Josewski
Susan Justison, RN
Audrey
& David Kamphenkel
Dan & Mary Karls
Lisa M. Kellner
Sharon Kemper
Tracy Ketzeback
Karen Kinsley

Leigh D. Klaverkamp
Larry &
Brenda Knutson
Amy Kramer
Miles & Rebecca Kulzer
Peggy Lange
Patricia Lanz
Ann Latterell
Cathy & Ed Laubach
Yvonne L. Leedah
Sherry Lehnen
The Malones
Eileen Maus, RN
Tanya Medcalf
Betty Moffitt
Pat & Mark Mohr
Kathryn Morin
David Evans & GERALYN
NATHE-EVANS
Kate Nienaber
Ida Oksa
Troy & Gail Olson
Amy Porwoll
Darin Prescott
Joni
& Duane Rasmusson
Trish & Jason Roehrl
Barb Scheiber
Jane Scherber
Kathi Schmidt
Kathy Sellnow
Brenda & Randy
Skarphol
Edna Skarset
Ann Marie Spanier
Steve & Jean Sperl
Alan & Barb Stang
Mary Struffert
Debra & Donald Stueve
Mary Super
Toni Tebben
Sandi Theisen

Joleen & John Thell
Kelly Thomton
Amy Trutwin
Marc &
Heather Vaillancourt
Linda Vanvalkenburg
Andrea Voigt
Molly Voigt
Jane Vortherms
Colleen Walquist
Linda C. Walz
Susan Weisbrich
Shannon Wenning
Melissa A. Winans
Judy Woods
Penny Zimny
Debra Zinken

15 Anonymous Stewards

30-Minute PATRONS Employees committed to 30-minutes per pay period

Gail Aalderks
Colin Anderson
Dean Anderson
Michelle Anderson
Steven Anderson
Rachel Appel
Jolene Archer
Pastor Ray Arveson
Eric Baird
Sue Baker
Lavonne Bangsund
Tina Bauer
Alicia K. Bauman
Sarah Becker
Carol Belling
Dan & Dorothy Bender
Marcia Bennett
Sarah Bergsnev

Pam Bertram
Ryan & Julia Bjerke
Donna Bloch
Monique Bork
Julia A. Bourne
Jeannie Boyle
Karen Brennhofer
Wanda & Brian Buck
Gail Buermann
Julie Bunkowski
Adam S. Burling
Diane Buschena-Brenna
Jeff Bushman
Maria Theresa V. Cabrera
Nancy & Craig Campbell
Janna L. Cannon
Kathy & Frank Carrier
Lillian Chenoweth
Patricia Christiansen
Carol D. Clement
Paulette M. Como
Karen Cooper
Katy Coppicus
Donna L. Corrigan
Mary Croat
Nancy K. Czech
Alison & Joel Dahlin
Tim & Lisa Dalton
In memory
of Dorothy Danzl
Mary Kay Demarais
Janel Dorn
Norma Doty
Karen Dougherty
Julia Draxten
Judith A. Dupre'
Dennis
& Vera Ebensteiner
Angela Ebnet
Kristi Enerson
Summer Erdmann, PT
Dianna Esplan

Sharon M. Evens
Tom & Gina Feldhege
Mary Filzen
Michele L. Fischer
Jason-Karla Fleming
& family
Jim Forsting
Alice & Steve Frechette
Samantha Fussy
Diane & Dale Gabrielson
Lisa Gapinski
Thomas Gapinski
Ron & Melanie Gedde
Kathy Geislinger
Keith Gerding
Kerry & Shannon Getty
Dawn Gibson
Tanya Glenz
Mickie Gocken
Sandy Greene
James Gulbranson, Jr.
Jim & Jo Gwost
Eileen & John Haas
Jennifer Hager
Sandy Haggerty
Amy Haines
Deb Hall
Mary Hallberg
Cynthia Hanson
Shelly Hanson
Mandy Harkess
Angelyn Harper
Tanya Hartman
Carrie Hayes
Michele Held
Karen Hennen
Keri Heroux
Justin Heurung
Mandie Hill
Amy Hilleren-Listerud
Trina Hinnenkamp
Sharon Hoffman

Richard L. Holder
Carol Holton
Betsy Horsch
Mollie R. Huls
Sandi Inderrieden
John & Brianna Inkster
Pamela Jackson
Clayton & Christine
Jacobson
Nicole Jacobson
Jan Jaskowiak
Gail Jenson
Stephanie Jeziorski
Jacki M. Johnson
Chuck & Sharon Kalkman
Shelly Kalthoff
Sue Kampa
Donna M. Kamps
Mary Kampsen
Becky Kastanek
Marie Katterhagen
Tom Keeler
Sandy Keller
Chris & Jamie Kipka
Marie Kirchner
Mary Klassen
Mary Klein
Donna Kleis
Tab Klimstra
Ron Klinkhammer
Bernice Klocker
Nancy Kneip
Deborah Knoll
Brenda Kockler
Karla Koenig
Mary Jo Koenig
Viv Koerner RN, CNOR
Jeff Konsor
Tami & Jason Koosmann
Pamela J. Kraker
Gert Krawczeski
Jennifer S. Krebsbach

Kevin Krenik
Carla A. Kroll
Barb Krona
Amy Krueger
Teresa Krueger
David Kryzer
Jen Kuhlman, RN
Melissa Lahn
Ann Langan
Judith Laudenschach
Wanda Leuty
Mona Libbesmeier
Debbie Linz
Melissa Lommel
Kerri Looman
Phil & Holly Luitjens
Chris Lunceford
Becky & Dan Lundgren
Steve Lungstrom
Heidi Lyrek
Shaun Mackenthun
Mary Macy
Jeff & Julie Magera
Rose Mairl
Jessica Makarrall
Judie Manea
Mary Martin
Philip & Mary Martin
Sue & Mike Martin
Sandra McColley-Wander
Lynette McGrath-Mansour
Yesenia Mejia
Neil Meyer
Douglas & Jane Mick
Beth Miller
John & Mary Kay Miller
Shannon Mohs
Teresa Mohs
Jenny Molitor
Linda Molitor
Jackie & Mark Molus
Deb Moritz

Angela Moscho
Betty Munsterteiger
Donna Nadeau
Sheila Nahan
Clara Nathe
Connie Ness
Shirley Nielsen
Charlene L. Niewind
Sandy Nimmo
Jeanine & Mike Nistler
Dan & Lori Norheim
Lori Notch
Carrie Oehrlein
Gordon & Suzanne Oettel
Michele Olmscheid
Carla Olson
Heidi M. Olson
Jo Ann Olson
Amanda Packert
Michelle Parson
D. Pelant, R.N.
Lynn Pender
Cheryl Peters-Lewis
Carolyn Peterson
David & Amy Peterson
Owen & Marcia Peterson
Emily Piccerillo
Rachael A. Piere
Howard Pierskalla
Jacqueline Pooler
Bruce & Margie Poser
Carol Rakow
Burton Ramsey
Katherine Rausch
Bruce & Mary Ann Reischl
Susan J. Rengel
Bret & Barb Reuter
Pamela Richardt, RN
Sarah Richter
Janene & Jim Riedeman
Sheryl A. Robinson

Candace M. Rolfes
Briana Ross
Stephanie J. Rudningen
Mary Rudolph
Sara Ruegemer
Sharon Rueter
Carla Rust
Cynthia & Dave Sakariason
Kelly Sakry
Melanie Salveson
Cynthia Sandberg
Joylena Saville
Heidi Savoini
Erin Scapanski
Scott & Michelle Scepaniak
Pamela J. Scheel
Ken & Mary Schimnich
Sarah Schindler
Joanne Schleper Nei
Kathy Schmidt
Nicole Schmidt
Pamela J. Schnettler
Katherine Schulz
Ivan Schumann
David R. Schuster
Margo Schwinghammer
Tracey Scott
Jennifer Seifert
Rena Sespene-Hinz
Pamela C. Siewert
Joan G. Silbernick
Wayne & Linda Skajewski
Donna J. Slettom
Janelle Sloan
Brandon Smith
Laura L. Smith
Joseph & Pamela Smoley
Stacy Solomonson
Sandy Spoden
Eileen Steffes
Jana Stone

Todd & Patty Stordahl
Craig & Carrie Stowell
Ann Summar, RN
Sheri L. Sweere
Lorene Swenson
Carol Symalla
Corrine Szafranski
Allison M. Tetrault
Carol Theis
Robin & Dave Theis
Trish Theisen
Jane D. Thole
Sandra Thomes
Ken & Jane Thorseth
Beth Thorsten
Robert & JoAnn Thueringer
Amanda Tichy
Brad & Cathy Tieva
Cassie Tinius
Patricia E. Tschida
Jon D. Tufte
Jeanie & Jim Turck
Kate VanBuskirk
Anne Marie Vannurden
Irene Vick
Diane L. Vogel, RN
Diana Waddell
Barbara A. Wagner
Chris Walker
Karin Walz
Renee Warzecha
Jennifer Waytashek
James Weber
Marilyn & Dave Weber
Heidi Weinand
Tasha Weinrich
Rosemary Weiser
Taffany Welch
Joseph & Heidi Wendt
Michelle Wendt
Krisie Widvey

Mike Willert
Denise Winter
Karen M. Witzman
Heather Wood
Krista Workman
Bridgette Worlie
Dustin Wroolie
Dawn M. Yilek
Emily Zempel
Gail Ziemer
Ann Zierden
Carol Ann & Dale Zika
Kara Zochert
Carla Zupko

65 Anonymous Patrons

FRIENDS Employees committed to other pay period gifts or cash gifts

Paul Abraham
Brenda Ackerman
Cindy Ager
Rebecca Ahlbrecht
Melissa Akerman
Susan Akre
Brian & Pennie Albers
Kelly Albertson
Marya Albrecht
Jean Albright
Leah Aleshire
Shelly Alexander
Melody Allen
Jessica Allen-Johnson
Diane Althaus
Ben & Charmin Amundson
Cassie Amundson
Amy Anderson
Bernice Anderson
Clare Anderson
Cynthia K. Anderson

Holly A. Anderson
Howard & Connie Anderson
Judy Anderson
Jyl Anderson
Kathy & Ted Anderson
Loretta Anderson
Pat Anderson
Patty Lee Anderson
Rachel Anderson
Ron Anderson
Venus Anderson
Lisa Anderson-Peck
Gary Anderst
Darlene Angst
Tim & Laurie Annett
Nancy Anson
Tracey Anthony
Tracy Arduser
Kelly Arnold
Eric Aschenbrenner
Melanie Ashfeld
Wendy Ashfeld
Jane Austing, RN
Jacqueline Baker
Deb & Craig Bakken
Susan Baklarz
Cathy Bales
Karen Bandar
Cathy Barden
Lisa Barker
Mary Barnfield
Debra Baron
Darla Barrett
Stacie Bartels
Jan Barthel, RN
Linda A. Barthelemy
Julie Bartos
Jennifer Bauer
Megan Baumann
Vickie Baumann
Erica Beach
Katrina Beack
Janet Bearden

Richard A. Beastrom
Allan J. & Jean Beckel
Daniel Becker
Karla R. Becker
Mary Becker
William K. Becker
Ashley Bednar
Kristin R. Beehler
Joyce Belanger
Amanda Bemboom
Amy Bemboom
Jacalyn Bendorf
Jessica Bennett
Sue Benoit
Collette R. Berg
Crystal Berg
Dorothy Berg
Joan Berg
Melissa Bergquist
Lee & Patty Bergstrom
Judy Berndtson
Angela Bertram
Denise Bethell
Michelle Bettin
Amy Bianchi
Annette Binder
Jeanne Blackmore
Sally Blair
Heather Blais
Marilee Blais
Christina Blattner
Patty Bloch
Barbara Blomker
Denise M. Blommel
Mary Lou Blonigen
Geri Boecker
Allan Boehmer
Brian Boehmer
Karen Boese
June Bohlig
Chad Boline
Julie Bollin
Lance Bollmeyer
Amy Bong

Lynn Borgert
Alisha Borst
Jennifer Borstad
Danielle Botzek
Sonja Boulton
Laura Boundy
Rhonda Bowser
Tamara Boyer
Polly Brambrink
Dean Bramstedt
Candace Braulick
Jodi Braun
Nancy Braun
Linda Brenner
Jen Breth
Jennifer Brinkman
Lori Brix
Nicole Broman, PT
Crystal Brown
Melonie Brown
Tim Brown
Tristina Brown
Patti Bruggeman
Brenda Brutger
Stacy Brzezinski
Deanna Buchta
Amanda Buerman
Renee Buerman
Cynthia Buhl
Joshua Buker
Mary & Tom Bukowski
Vicki Burg
Kim Burnett
Thomas Burns
Maryann & Andrew Burrows
Carmen Butala
Deanna Butcher
Ladonna Butenhoff
Deb Byram
Audrey Cady
Deanna Cahill
Rachel Calvert, CCLS
Betty Campbell
Dawn Captain

Corinne Carlson
Teri Carter-Sauer
Sara J. Casper
Dean Ceminsky
Jayleen Chance
Henry Chapa
Renee Chapa
Jeremy Charles
Melissa Chase
Marlene & Roger Chirhart
Linda & Joe Chmielewski
Michelle Chmielewski
Jody Christen
Corazon Christian
Melissa Christinsen
Gwen Clark
Janelle Clark
Edward E. Clemens
Pam Clemens
Emma Cluka
Lynnette Codden
Barb Cooney
Kim Cordie
Deb Corrigan
Beverly Court
Keith Craft Family
Sandy Cremers
Catherine A. Cripe
Mr. & Mrs. Lee Croal
Cindy Croat
Julie Cumming Wood
Sue Cummings
Bill & Bonnie Curtis
Denise Curtis
Jenny D.
Lorilee Dady
Al & Gin Dahl
Holly Dammann
Mary Danaher
William C. Danell
Stephanie Danger
Sue Daniels
Anne Darling
Joy Decker

Patty Decknatel
Ben Dehn
Sandy Dehn
Donnie Delcastillo
Dawn L. Demant
Joanne Deter
Debra Determan
Anne Deters
Curtis Devos
Sara Devos
Deborah J. Devriendt
Craig Dewar
Jolene Dickerman
Sonia Dickrell
Lori Diederichs
Gabriel Diedrich
Susan Dierkhising
Jessica Dietl
Robert Dilley
Fr. Meinrad Dindorf, OSB
Marie Dingmann
Vern & Joyce Dingmann
Jaelyn Dinndorf
Kimberly Dodds-Thompson
Wanda Doering
Linda Doerr
Linda M. Donabauer
Vicky Donnay
Tiffany Donnell
Kathryn Dooley
Kim Dorholt
Natalie Dornbusch
Deborah Doub
Sara Doyle
Miki Dreyer
Gerald Dungan
Patrick & Sharon Dunham
Molly Dunn
Jill M. Dupre'
Joe Dylla
Mel & Faye Dyson
Julianne Ebnet
Mavis Eckes
Sharon Eckhoff

Mary & Ryan Eckholm
Lisa Edelbrock
Susan Egbers
Mary Eisenschenk
Lori Eiyneck
Paula Elfering
Jennifer Ellering
Suzanne Elmes
Sandy Engdahl
Janice Engebretson
Haley Entner
Janice Erickson
Rachel Erickson
Linda Ertl
Barb Euteneuer
Mary Evans
Nancy Evans
Joanne Eveslage
Jennifer Falk
Nancy F. Fandel
Al Faust
Pat Faust
Sandi Feldewerd
Rosie Feneis
Kelijo Fernholz
Angella Ferris
Manuel Figallo
Mary Findlay
Kara Fink
Darla Finke
Gene Fischbach
Barbara Fischer
Gina Fischer
Lynda Fish
Cody Fisher
Ruth Fladmark
Cynthia A. Flatley
Marci Fleck
Jeff Fleischmann
Denise & Bill Fleming
Katie Florek
Sandy Florek
Margo Lea Flynn
Abby Foley



Sue Malone

CentraCare Clinic – Women & Children

“I am a reader and believe everyone should be,” said Sue Malone, a pediatric hearing and vision technician for

CentraCare Clinic – Women & Children. “It makes a difference when children begin to love books at a younger age.”

Sue chose to give to the Employee Campaign because of her passion for the Reach Out and Read Program. The program donates a new or gently used book to patients 6 months to kindergarten age during their well-child check-ups. “It is just one more thing we do to put our patients first,” she said. Sue also contributes to the program through other ways, such as fundraising, writing grants and ordering books.

Sue knows CentraCare has always promoted reading. “I remember bringing my son to the doctor at CentraCare Clinic – Women & Children in 1995, and they always had books in the waiting and exam rooms,” she said. “My son and I would enjoy the books so much it was almost disappointing when the doctor would come in. Until, of course, I remembered the exceptional care my son receives.

“In the current recession, many parents don’t have money to buy extra things, like books,” Sue said. “No child should be denied a book. It’s great to know where my money is going. I am putting it back into the place where I work so I know it is used constructively.”

Nancy Ford
Connie Fordyce
Yoshiko Foreman
Brenda Foster
Melissa Fradette
Susan M. Frank
Jean Franz
Angie French
Kathy Frenn
Troy Frerich
Ann Frericks
Jeanne & Paul Friebe
Kate Fritz
Dean A. Frolek
Ken & Joy Fuchs
Pat Fuchs
Sharon & Keith Fuchs
Sheila A. Fuchs
Christen Funk
Shirley Funk
Julie Gaffaney
Elizabeth Gaida
Stephanie Gall
Jeff & Lea Gallagher
Michelle Gamble
Amy Gamradt
Scott & Wendy Gangl
Courtney Gapinski
Mark J. Gartner
Ryan Gebhardt
Michelle Gehling
Marissa Genty
Ryan George
Gessner Family
Earl & Gwen Gherke
Judy Giffin
Gerry Gilbertson
Roxann Gill
Sandra Girtz
Kristin Gjerset
Colleen Glenz
Julie Goebel
Mary Goebel
Bonnie Goedecke

Barbara & Brian Goenner
June Goff
Meghan Gohman
Sarah & John Golly
Vikki Gore
Amy Gorecki
Trisha Gorecki
Connie Goulet
Marlene Graham
Kurt Gramith
Grandparents
Darla Gratke
Daniel Green
Jennifer Greener
Tally & Timothy Gregor
Patty Gregory
Kathy Groetsch
Stacy Groves
Sherry Gruber
Danielle Gulsvig
Diane Gustafson
Roxanne Gutknecht
Amber Guzman
Sandy Habiger
Dr. Christopher Hagen
Shannon Hagman
Cheryl Halaas-Greenwaldt
Karen Halbakken
Holly Haley
Debra R. Hall
Peggy Hall
Roxane Hall
Kim Hallgren
Lynzie Halvorson
Terri J. Hansen
Diane Harms
Rosie M. Harren
Donna K. Harris
Charles Harrison
Patricia & Richard Hart, MD
C. Hartmann
Kristine Hassebrock
Jackie Hauglund
Beth Hauser

Linda Hazel
Mary Heck
Susan Heidal-Schiltz
Rachel Heikkila
Jennifer Heinen
Jill & Nicholas Heinen
Kent G. Heise
Tricia Heitzman
Delphine Held
M. Kim Hellier
Shelly Hemmesch
Jodi Hemminger
Debbie Henderson
Jodie Henderson
Kathryn Hendrickson
Shantel Hendrickson
Bernadine Hennek
Judy & Daryl Henneman
Amy S. Hennen
Pat Hennen
Kristine Hennix
Jessica Henrichs
Patty Henry
Jennifer A. Herberg
Judith Herdan
Anita Herold
Patricia Herold
Peggy Hess-Johnson
Susan B. Heysse
Peggy Hickman
Pat Hieb
Tara High
C. Hilden
Dawn Hill
Jodi Hillmer
Kathy Hines
Alicia Hinnenkamp
Patsy Hinnenkamp
Judith Hirschfeld
Erin Hjort
Tonya Hoaglan
Mary Hodgins
David Hodnik
Carol Hoffman

Sarah Hoffman
Karen Hoftyzer
Janet Holmberg
Janet Holt
Jessica Hom
Brenda Hommerding
Joan Hommerding
Denise Honkomp
Linda Hooser
Laura Hoppe
Nancy Hoppe
Peggy Hopper
Sharon Houg
Leon Huberty
Stacy Huls
Angie Huseth
Andrea L. Hylla
Justin & Kellie Irlbeck
Barbara Isaacson
Laura Isaacson
Patty Jaclyn-Doty
Diane Jacobs
Jeff Jacobs
Julie Jacobs
Susan Jager
Dani Jakubowski
Nancy James
Carleen Janey
Michelle Jaskolka
Brian Jemming
Judy Jensen
Charles, Rosemary Jernberg
Carol & Gerry Johannes
Kathrin A. Johansen
Barb Johnson
Carol Johnson
Cathalene Johnson
Donna Johnson
Kelly A. Johnson
Laverne Johnson
Lori Johnson
Lowell & Kathy Johnson
Robin M. Johnson
Susan M. Johnson

Susie Johnson
Laura Johnston
Amanda Jones
Brian & Tina Jones
Dennis Jones
Janet Kardell
Joy L. Karels
Wesley Karls
Laura Karnik
Keith & Sue Karsky
Joyce Katke
Sharon Keim
Brandy Kelly
Amy Kemp
Sana Kennedy
Kristi Kenney
Lisa Kickhafer
Kevin Kieke
Karen Kierzek
Marvin Kiffmeyer
Todd & Lisa Kilgard
Jessica King
Lisa Kirchner
Sonja Kirk
Naomi Kiscaden
Brenda Kissinger
Jessica Klahpake
Kathy Klaustermeier
Bridget & Michael Klein
Larry & Linda Klein
Patricia Kleinart
Dale & Karen Kleinschmidt
Bob Klick
Jennifer Klick
Charlene Klimek
Sharon Klimek, RN
Lori Klinkhammer
Kimberly Kloss
Carol Klug
Dorothy Knapper
Jessica Knoll
Laura Knopp
Paul Knutson
Leslie Kockelman

Melissa Kockler
K. Koenig
Carmel Koep
Pat Koerner
Kimberly Korneck
Nancy Kostreba
Sara Kraemer
Jamie Kral
Terri Krause
Lois A. Krick
Gene Krogstad
Karla Kröll
Diane Kron
Jolene Krsiean
Denell Kruse
Janet Kruzel
Trisha Kubasek
Marge Kuechle
Stacy Kuechle
Gwen Kunkel
Tanya Kunkel
Joy Kurth
Lynna LaFore Christensen
Laura Laho
Deborah Lahr Perkins
Ryan Lamberg
Amber Lambertson
Janet Lammersen-Sheets
Karen M. Lange
Pat Langer
William & Helen Langford
Peggy Laraway
Sharon Lee Larson
Karen Lashinski
Samantha Lashinski
Arlene A. Laudenschick
Stephanie Laudenschick
Susan Laudenschick
Michelle Lauer
Val Laueremann
Arloene Lavine
Deb Lawrence
Kristine Lawrence
Colleen Layne

Karen Legg
Colleen Leininger
Tiffany Lemieur
Bylan Lemke
Mary Jo Lemke
Nadine Lemke
Dawn Lenarz
Lois Lenzmeier
Glenn Lepine
Nita Lerdahl
Rachael Lesch
Amber Leyk
Cynthia Libbesmeier
Jill Libbesmeier
Ellen Licciardi
Julie Lieberg
Sherri Liebl
Doris Lieser
Noelle Lieser-Chaudhary
Brenda Liestman
Derek Lilleberg
Jodi Lillemoen
Carol J. Loch
Natalie Loch
Sheri Lochner
Janelle M. Loehlein
Shirley Loehr
Rustum Logrono
Eric Lohn
Annie Lommel
Mary & Gary Loven
Kathleen E. Luberda
Erin Lundin
Shirley Lutgen
Teresa Luttschwager
La Rae Lymer
Kristy Lynch
Leslie Maas
Marcie Maddox
Kelly and Lori Mader
Judith L. Majerus
Sandy Manderfeld
Nate Manning
Heather Marcus

Heather Marcyes
Geraldine Marek
Rebecca Marquardt
Luann Marschel
Shelley Marshall
Nancy & Erich Martens
Nicky Marthaler
Peggy Marthaler
Carolyn Martin
Lucinda Martin
Fran K. Martini
Denise Massmann
Janet Massmann
Jane Mathiasen
Steve & Brenda Maus
Kim May
Mary K. May
Nancy May
Tanya Mazzone
Terri McCaffrey
Kelly McCarney
Peggy McClanahan
Michelle McDonald
Kathleen McDowall
Mike McGuire
Joy McKenzie
Todd McSorley
Sara Meemken
Joseph F. Mehr
Jeanne Mehrwerth
Christina Meierhofer
Lindsey & Paul Menard
Kevin & Sharon Mentzer
David Menzhuber
Kay Mercil
Kristi Merten
Judi Mertens
Ann Mertes
Andrea Metcalf
Kathy Meyer
Laurie Meyer
Michele Meyer
Jennifer H. Meyers, CNM
Lori Meyers

Dawn Michaud
Christine Midas
Deborah Midas
Jill Mielke
Samantha Milam
Jennifer Miller
Jessica Miller
Laura M. Miller
Ronald Miller
Sara Miller
Cheryl Minks
Stasia Mock
Roseann Moeller
Janel Moening
Melinda Moening
Abdul Mohamed
Randy Money Penny
Janet Montreuil-Althaus
Jeanine Mooney
Marcia A. Morin-Brandvold
Jessica Morrell
Kelly Mortensen
Julie Mortezaee
June Moshier
Lisa Moske
Roxanne Moulzolf
Mary K. Mueller
Michelle Mueller
Sara Muellner
Mary Ellyn Muhlhauser
Lisa Mullen
Stephen Mullen
Tonya Mumm
Mary Murphy
Pat Mustonen
Julene Muyres
Julie Nacey
Melissa Nagengast
Crystal Nahan
Erin Nash
Angela Nathan
Deborah Nathan
Christy Nathe
Karen Neis

Christine Nelson
Janet Nelson
Kris Nelson
Michele Neuhauser
Darla Neumann
Lisa Nicholson
Terri Nicoski
Dana Nierenhausen
Patricia Nistler
Julie Nohner
Donna Nordang
Dustin & Jenny Norton
Dianne Notch-Iburg
Sue Ann Nugent
Andrea Nyquist
Jane Nyren
Terry & Shirley Nystrom
Jody Oehrlein
Bonnie Ogg
Shelly O'Leary
Becky Olson
Carol D. Olson
Elesabeth Olson
Ruth Olson
Sara Olson
Elaine I. Omann
Tiffany Lee Omann-Bidinger
John O'Neil
Kerry O'Neill & Kyle Fossen
Jami Orndorff
Sandy Orton
Pat Osbourn
Bernie Ostendorf
Roxie Ostendorf
Carol Overfors RT (R)(M)
Angela Overland
Melissa Pajari
Dr. Scott & Susan Palmer
Jessica Parker
Mary Parker
Denise Patraw
Jessica Patrick
Nick Patterson
Kari Patton

Cindy L. Paul
Deb Paul
James Paulsen
Kathleen Paulsen
Rob Paulsen
Mary Jo Paulson
Kathryn Payne
Sheila Pearson
Sarah Peckskamp
Viana M. Pederson
Sue Peichel
Nicole Pelach
Ellen J. Pelletier
Jeanette Pendergast
Brenda Peschl
Melissa Petersen
Cheryl Peterson
Derek Peterson
Jason Peterson
Julianne Peterson
Karla Peterson
Lynn Peterson
Kami Petrek
Amy Pettey
Mary Jo Pfannenstien
Penny L. Phillips
Kimberly Piersak
Bob Pikus
Joan Pilot
Cheri Pitschka
Karlyn & Russ Pogatchnik
Colleen Pommier
Audra Popp
Ted & Bonnie Popp
Mary K. Porwoll
Lori Potter
Melissa Pozorski
Carol Primus
Danita Primus
Ruth C. Primus
Susan Primus
Brenda Prososki
Robert Prososki
Donna Provo

Joan Przybilla
Diane Psyck
Jennifer M. Puhalla
Judy Pundsack
Mary Puterbaugh
Jennifer Quigley
Masayo Radeke
Anita Rademacher
Nicole Radika
Jeannie Rajkowski
Deb Ramler
Alice Rammel
John Rammel
Jen Ramthun
Deb Randall
Angie Rangel
Wanda Rathbun
Alan Rathcke
Mie Ratliff
Samantha Rausch
Jen Rehm
Joanne Reinhart
Karen Reinholz
Diane Reis
Stacy Reisinger
Kyna Reiter
Jennifer Reitz
Mary A. Rennie
Vicki Rhoda
Mark Rian
Kelly Richards
Hollis & Pamela Rickbeil
Megan Riddle
Peggy J. Riedel
Danielle Ritter
Janet Robasse
Curt Robbins
Cindy Robertson
Carol Robinson
Kim Robinson
Valery A. Robinson
Teresa Rock
Andy & Judy Roehl
Jean Rogers

Rebecca Rogholt
Michelle Rosenberger
Michele Roshia
Kelly Rossman
Patty M. Roth
Amy Rothstein
Tanya Rothstein
Mike Royer
Tara Rudser
Carolyn Ruegemer
Paul Ruegemer
Rebecca Ruegemer
Marilyn T. Ruhland
Kimberly Ruprecht
Amber Rusert
Sue Rushmeyer
Margaret Russell
Debbie Sadergaski
Laura Saehr
Cynthia Sakariason
Rhonda Salaski
Linda E. & William J. Salzer
Stacey Salzer
Courtney Salzl
Barb Sand
Tamara Sankey
Robin Sass
Catherine Sauer
Angi Schave
Rebecca Scheiber
Nancy Schempp
Dianne Schendzielos
Bob & Betty Schenk
Patricia Scherping
Rita Scherping
Lynn Schiller
Sian Schiller
Jody Schirmers
Janet Schlangen
Gail Schlauderaff
Ruth Schleper
Susan Schleper
Mary Schlichting
Eric Schloe

Tammy Schlumpberger
Cynthia Schmidt
Laurie Schmidt
Evonne Schmidtbauer
Kim & Lyle Schmidtbauer
Amy Schmit
Kathy Schmit
Lois Schmitt
Mary E. Schmitt
Nancy K. Schmitt
Patty Schmitz
Alice Schneider
Annette Schneider
Jodi Schneider
Naomi Schneider
Pat Schneider
Paul & Shirley Schnobrich
Paul Schoenberg
Carol Agatha Schott
Jennifer Schreifels
Jolaine Schreifels
Ruth A. Schroeder
Lisa Schuett
LouAnn Schuller
Deb Schultz
Kathryn A. Schultz
Sarah Schultz
Taryn Schultz
Lynn Schuster
Kathleen Schwanke
Mark Schwinghammer
Marlene Schwinghammer
Mary E. Scott
Mary Scott
Beverly Scriptor
Diane Seegers Kyle
Geraldyn Segelstrom
Sandra M. Selander
Joni Serena
Kevin Shank
Michelle Shaw
Shirley Shaw
Robert Shea
Mike & Cathy Sigler

Zachary Simonson
Diane Sinell
Sisters of the Order
of Saint Benedict
Kirsten N. Skillings
Karolyn Skudlarek
Kathlyn Smekofske
Cheryl Smith
Janice Smith
Victoria Smith
Brenda Smoley
Kristine A. Smoley
Nicole Solarz
Taryn Solberg
Lisa Soltis
Sarah Soltis
Richard Soukup
Kimberly Sowa
Sharon & Ron Spanier
Sherri Spanier
Joy Sparland
Jo Ann Spaulding
Natalie Spencer
Desiree Spoden
Brenda Spychala
Kim Stachovich
Linda Stanert
Susan M. Stang
Audra Stangl
Barbara Stanley
Renee Stark
Becky Staska
Katie Staska
Sandra Lee Statz
Heather Statz-Urseth
Sherri Staudinger
Marianne Steichen
Beverly Steil
Carol Steil
Ashley Steinhaus
Jan Stellmach
Cheryl Stenzel
Angela Stevens
Gina Stimack

Rebecca St. Jean
Lori Stock
Jeremy & Gloria Stockinger
Stefinie Storms
Janet Stover
Holly Stowe
Jan Strommen
Karen Struzyk
Melissa Stuckmayer
Sarah Studniski
Gwen Studnick
Mary Sund
Chris Supan
Heidi Supan
Molly Sveum
Jodi Swanson
Viki Swanson
Lindsey Sweep
Brenda Swendra-Henry
Jessica Symanietz
Tiffany Tangen
Patricia Tate
Linda Tauber
Patrick Taufen
Jacqueline Tavale
Kelly Teff
Michelle Templin
Scot Tepley
Beverly Terlisner
Mary Theis
Pam Theisen
Carol Thelen
Karen Then
Sheryl Theuninck
Doris Thielen
Catherine Thielman
Brian J. Thieman
Ashley Thoennes
Corey S. Thoma
Joe & Jessica Thoma Family
Bradley Thompson
Catherine Thompson
Janelle Thoreson
Gail Thorson

Lisa Lahr

CentraCare Health System – Long Prairie



To get to work, Lisa Lahr, from Sauk Centre, doesn't walk through the doors of St. Cloud Hospital; she walks through the doors of CentraCare Health System – Long Prairie. However, Lisa, a physical therapist in Long Prairie, chose to support the CentraCare Health Foundation's Employee Campaign because of the positive experiences she's had at St. Cloud Hospital.

Lisa's first introduction to St. Cloud Hospital was in 2001 when her husband, Aaron, was involved in a car accident. Aaron spent six weeks in the hospital with a pelvic fracture. "We were so fortunate to be able to receive his care at St. Cloud Hospital," she said. "It's nice to have access to such excellent care so close to home."

In 2007, Aaron and Lisa were once again through the doors of St. Cloud Hospital when their son, Jacob, was born six weeks premature. Jacob spent one week in the Neonatal Intensive Care Unit. "The unknown experience of having your first baby is already frightening," Lisa said. "But when you learn it will be a premie, it's overwhelming. The nursing staff was so helpful and calming. I couldn't have asked for a better experience."

Lisa and her family feel especially passionate about the Gorecki Guest House. When both Aaron and Jacob were hospital patients, the guest house's predecessor, River Oaks Hospitality House, was full. "I was lucky enough when Jacob was born to be able to stay down the hall from him in a patient room," she said.

"It's important to be close to your loved one when they are sick," Lisa said. "That's impossible if you have to drive back and forth to Sauk Centre. Now, with the Gorecki Guest House that can accommodate more guests, people won't have to worry about finding a place to stay near the hospital when they have a loved one who is a patient there.

"We are so fortunate to have CentraCare Health System in our community that is capable of providing such a wide variety of services. I want to make sure that continues."



Trish Roehrl

CentraCare Health System – Melrose

Growing up south of Melrose, Trish Roehrl knows the importance of having high-quality health care in rural

communities. Trish is the lab manager at CentraCare Health System – Melrose. “Being in the medical field, I have the advantage of knowing a bit more about what is out there and where to go if I need health care services,” she said. “My family, however, must trust that the medical team here is providing the best, most current care they can. I support the Employee Campaign to make sure that happens.

“With budget constraints, it is difficult for medical facilities to update everything,” Trish said. “My financial support helps the hospital extend its services and allows equipment and facilities to be updated more often. It’s great that our local services can provide care for newborns to senior citizens so we can remain close to our family and community.”

The Roehrl family is excited that their donation will go toward the Wellness Room being built at CentraCare Health System – Melrose.

“It will be an expansion of our nursing home facility and services,” Trish said. “It will be a room for our residents to stay active with a variety of exercise equipment and a Wii game system. This will give them a place to go to be physically and mentally active with their families.”

No one in Trish’s immediate family currently will use the Wellness Room; however, she thinks it will be great to have it available to those who will benefit from it in the Melrose community.

- | | | |
|-------------------------|-------------------------|------------------------------|
| Elaine Thyen | Sharon Walesch | Joe Wilson |
| Chris Timmer | Katie Waltman | Deb Wimmer |
| Jessica Tindal | Dena & Dave Walz | Keri Wimmer |
| Cheri Tollefson-Lehse | Wendy Wang | Beverly Winczewski |
| Kara Tomazin | Julie Warnberg | Ruth Wingeier, CNM |
| William Torborg | Lisa Warner | Joan Winkelman |
| Jessica L. Trager | Julie Warzecha | Kathy Winter |
| Jeff Trimble | Jodi Warzecka | Kathleen Wollak |
| Arlene Troness | Dawn Wasserman | Jeanne Woods |
| LeAnne Troxel | Kimberly Watercott | Tami Woolridge |
| Valerie Tschakert | Andrew Weber | Kelly Wurdelman |
| Greg Tschida | Marla Wegleitner | Michelle Wurzberger |
| Julie Tschida | Mary K. Weis | Sheryl J. Yassin, RN |
| Brenda Turner | Ann Weismann | Diane Zabinski |
| Sara Tylutki | Matt Weiss | Connie Zak |
| Kimberly Uecker | Paulette Weleski | Gloria Zander |
| Celeste Ufer | Amanda Welle | Patty Zapf |
| Sue Umerski | Sarah Welsh | Elizabeth Zasoski |
| Jennifer Unger | Libby Wenderski | Blake Zenner |
| Carol Upcraft | Clare A. Wengert | Carol & Lynn Ziegler |
| Therese Urzi | Diana M. Wenning | Cynthia M. Zieglmeier |
| Karl Van Beckum | Janell Wesenberg | Irene Zierden |
| & Dr. Catherine Verilli | Jason Wesenberg | Kristi Zimmer |
| Laura Van Heel | Christi Westra | Ruth Zinken |
| Debbie Vanheel | Carissa Westring | Tracy Zupin |
| Andra K. | Kristine Whitcomb | Karen Zwiener |
| Vankempen-Middlestaedt | Dayna White | Johanna M. Zwilling |
| Lynette Vanlonden | Daniel & Judy Whitlock | Michael Zyvoloski |
| Christy Vanvickle | Betty Widmeier | 275 Anonymous Friends |
| Melissa Vee | Sonya Wieber | |
| Lisa R. Villarreal | Bonnie Wiehoff | |
| Stacey Villeneuve | Deb Wieling | |
| Steve M. Vincent, PhD | Megan Wilcox | |
| Erin Virnig | David & Caroline Wilder | |
| Amber Vogt | Julie Wilfong | |
| Karla & Larry Voigt | Amandah Wilhelm | |
| Linda & Scott Voigt | Deb Wilkins | |
| Sarah Volker | Mike & Joan Willenbring | |
| Brittany Voth | Amy Williams, RN | |
| David Waage | Jessica Williams | |
| Kimberly Waara | Nancy Williams | |
| Tom Wachlarowicz | Barbara Willie | |
| Shaleen Wahlstrand | Carla Wilson | |
| Julie & Jason Wald | Dorothy Wilson | |

boards of directors

CentraCare Health System Board of Directors

Rick Bauerly
Michael Benusa
Thomas Cress, MD
Glenn Forbes, MD
Keith Leavell, MD
Thomas Leither, MD
Gary Marsden
Terence Pladson, MD
Robert White
Mary Jo Williamson
Gene Windfeldt
Mohamed Yassin, MD
Term ended in 2010:
Paula Revier, OSB
Thomas Schrup, MD

CentraCare Clinic Board of Directors

Thomas Cress, MD
Glenn Forbes, MD
Allen Horn, MD
Kathleen Kulus, MD
Keith Leavell, MD
Thomas Leither, MD
Deb McCarl, MD
David Roberts, MD
Denise Rosin
Gene Windfeldt

CentraCare Health Foundation Board of Directors

Barb Anderson
Stacia Anderson, MD
Craig Broman
Barb Caspers
Mark Coborn
Thomas Cress, MD
Jim Davis
Nancy Ferche
Linda Feuling
Jeff Gau
Allen Horn, MD
Dwight Jaeger, MD
Mark Krebsbach
Mark Larkin
John Mahowald
John McDowall
Marilyn Obermiller
Terence Pladson, MD
Marc Sanderson
John Schmitz, MD
Chris Shorba
Kim Spaulding, MD
Wendy Verkinnes
Loren Viere
Mary Weitzel
Brad Wheelock
Term ended in 2010:
Mae Ellingson-Skalicky
Dorothy Gorecki
Jean Juenemann, OSB
John Weitzel

CentraCare Health System - Long Prairie Operating Committee

Pete Berscheit
Terri Jo Cadwallader
Jim Davis
Rene Eldidy, MD
Don Hansen
Sally Hanson
Chris Orecchia
Thomas H. Sellnow
Thomas Steinmetz
Dan Swenson
Paul E. Van Gorp, MD
Termed ended in 2010:
Chad Bense
Jeanette Pesta

CentraCare Health System - Melrose Operating Committee

Jim Davis
Gene Enneking
Gerry Gilbertson
Mary Linnemann
Kurt Schwieters, MD
Lori Seawell

St. Benedict's Senior Community Operating Committee

Evelyn Bancroft
Teresa Bohnen
Craig Broman
Mark Christianson
Linda Doerr
Benedict Gorecki
Diane Hageman
Colleen Haggerty, OSB
Jacqueline Schuh

Term ended in 2010:
Lori Vrolson

St. Cloud Hospital Board of Directors

Anthony Akubue, EdD
Miriam Ardolf, OSB
Mike Benusa
Teresa Bohnen
Craig Broman
Chris Coborn
Paul Dorsher, MD
Father Marvin Enneking
Ron Hanson, MD
Kara Hennes, OSB
Steve Laraway
Cindy Jensen Melloy, MD
Sandy Neutzling
Brett Pinkerton, MD
Jim Schlenner
Chris Tacl, MD
Joan Volkmuth
Pastor Thomas Wright
Term ended in 2010:
Paula Revier, OSB
Kim Schaap, MD

St. Cloud Hospital Corporate Members

Nancy Bauer, OSB
Father Marvin Enneking
Barbara Grachek
Kathleen Hobday, MD
Donald Kainz
Bishop John Kinney
David Noack
Sharon Nohner, OSB



CENTRACARE Health System

1406 Sixth Ave. N. | St. Cloud, Minn. 56303