

2016

ETC Code Stroke Improvement

Melissa Fradette

CentraCare Health, fradettem@centracare.com

Jessica Miller

CentraCare Health, millerjes@centracare.com

Follow this and additional works at: https://digitalcommons.centracare.com/nursing_posters



Part of the [Other Nursing Commons](#)

Recommended Citation

Fradette, Melissa and Miller, Jessica, "ETC Code Stroke Improvement" (2016). *Nursing Posters*. 60.
https://digitalcommons.centracare.com/nursing_posters/60

This Book is brought to you for free and open access by the Posters and Scholarly Works at DigitalCommons@CentraCare Health. It has been accepted for inclusion in Nursing Posters by an authorized administrator of DigitalCommons@CentraCare Health. For more information, please contact schlepers@centracare.com.



ETC Code Stroke Improvement

Melissa Freese BSN, RN, CNRN & Jessica Miller MS, APRN, CNS

St. Cloud Hospital, St. Cloud, Minnesota

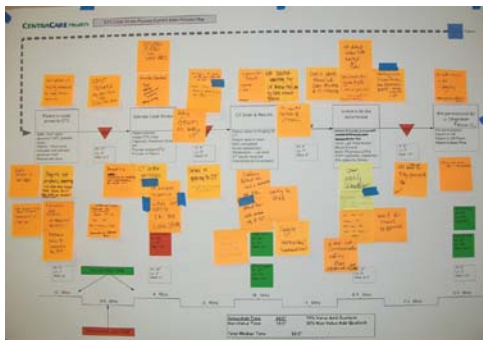


Plan

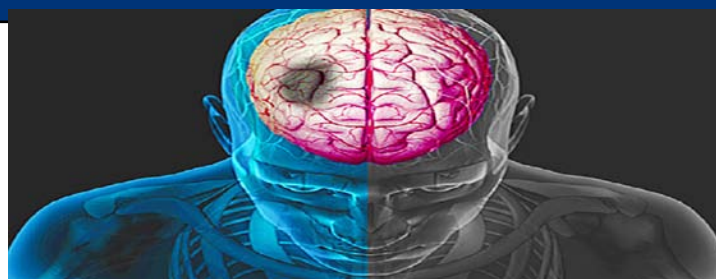
There was a 42% increase in median times for patients receiving alteplase (tPA) within 60 minutes from 48 minutes in Q3FY13 to 68 minutes in Q1FY15. Research indicates every 15 minute delay in stroke treatment, the odds of good outcome decreased by 10%.

Do

During two day rapid improvement event team members and content experts used process mapping to identify waste in current state ETC Code Stroke process and determine countermeasures to eliminate waste and improve throughput.



Check



	Measure	Baseline Jul-Mar FY15	Target Jul-Dec FY16	Actual Jul-Dec FY16
Safety/Quality	Patient receipt of tPA within 60 minutes of arrival to ETC	52%	60% (15% improvement)	66% (27% improvement)
	Door to CT initiated < 25 min.	60%	85% (42% improvement)	90% (50% improvement)
	CT initiated to report < 20 min.	79%	90% (14% improvement)	82% (4% improvement)
Customer Satisfaction	Door to ETC MD < 15 min.	66%	90%	84% (27% improvement)
People	Reduce process wastes	48	24 (50% reduction)	39 (19% reduction)

Act

- Alteplase checklist initiated by EMS
- Focus review by ETC MD before CT
- Notify Stroke Provider before CT resulted
- Order CT perfusion and alert pharmacy to potential Alteplase need upon Stroke Provider recommendation
- Create Code Stroke Cart
- Glucose meter at triage desk
- Last Time Known Well on white board

Team Members

Melissa Freese, BSN, RN, CNRN Stroke Care Specialist
 Jessica Miller, MS, APRN, CNS Performance Improvement Clinical Consultant
 Jean Lund, MBA, Performance Improvement Consultant
 Sherri Reischl, RN, ETC Education
 Jenny Moores, RN, ETC Staff
 Kris Faber, Core Charge Nurse, ETC
 Kayla Dingmann, BSN, RN Core Charge Surgery
 Sarah Keeler, ETC Technician
 Michelle Kottke, CT Scanning Tech Specialist
 Aderonke Gbadebo, MBBS, MPH Senior Quality Data Analyst

References

Jauch EC, Saver JL, Adams HP Jr, Bruno A, Connors JJ, Demerschalk BM, Khatri P, McMullan PW Jr, Qureshi AI, Rosenfield K, Scott PA, Summers DR, Wang DZ, Wintermark M, Yonas H, on behalf of the American Heart Association Stroke Council, Council on Cardiovascular Nursing, Council on Peripheral Vascular Disease, and Council on Clinical Cardiology. Guidelines for the early management of patients with acute ischemic stroke: a guideline for healthcare professionals from the American Heart Association/American Stroke Association. *Stroke*. 2013; 44.

Powers WJ, Derdeyn CP, Biller J, Coffey CS, Hoh BL, Jauch EC, Johnston KC, Johnston SC, Khalessi AA, Kidwell CS, Meschia JF, Ovbiagele B, Yavagal DR, on behalf of the American Heart Association Stroke Council. 2015 AHA/ASA focused update of the 2013 guidelines for the early management of patients with acute ischemic stroke regarding endovascular treatment: a guideline for healthcare professionals from the American Heart Association/American Stroke Association. *Stroke*. 2015;46.

Britz, G., Constable, M., Fonarow, G., et al. (2011). A qualitative assessment of practices associated with shorter door-to-needle time for thrombolytic therapy in acute ischemic stroke. *Journal of Neuroscience Nursing*. 43(6), 329-336.

Ford, A., Williams, J., Spence, M., et al. (2012). Reducing door-to-needle times using Toyota's lean manufacturing principles and values stream analysis. *Stroke*, 43(12), 3395-3398.

Bhatt, D., Fonarow, G., Hernandez, A., et al. (2014). Door-to-needle times for tissue plasminogen activator administration and clinical outcomes in acute ischemic stroke before and after a quality improvement initiative. *JAMA*. 311(16), 1632.