

CentraCare Health

DigitalCommons@CentraCare Health

Patient Care News

CentraCare Health Publications (Newsletters,
Annual Reports, Etc.)

6-2003

Nursing News: June 2003

St. Cloud Hospital

Follow this and additional works at: <https://digitalcommons.centracare.com/patient-care-news>



Part of the [Organizational Communication Commons](#)

♥ NURSING NEWS ♥

Volume 24 Number 6

St. Cloud Hospital, St. Cloud, MN

June, 2003



American Nurses Credentialing (ANCC)

The process for accrediting education towards American Nurses Credentialing (ANCC) has changed. In the past, we obtained ANCC through the Minnesota Nurses Association Continuing Education provider process for some of our conferences. The Minnesota Nurses Association is no longer providing organizations with provider status. Since many of our nursing staff (i.e. surgery, etc.) still need the ANCC level of accreditation we have chosen to align with the Wisconsin Nurses Association to continue to provide ANCC accreditation.

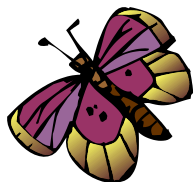


The Minnesota Board of Nursing CEU (non-ANCC) process will remain the same. However, when you attend an ANCC certified educational event, you will note that the statement on your CEU record reads:

St. Cloud Hospital, St. Cloud, MN, is an approved provider of continuing nursing education by the Wisconsin Nurses Association Continuing Education Approval Program Committee, an accredited approver by the American Nurses Credentialing Center's Commission on Accreditation.



We wanted to make certain the nursing staff was aware of this change from Minnesota to Wisconsin. It does not affect how you submit your CEU's for relicensure.



*Vickie Ruegamer
Education Coordinator*

Educational and Professional Development Programs

September 2003

- 10th Unlicensed Precepting Basics, Fireside Room
- 22nd/23rd (W) Pain Conference (both days), CentraCare Health Plaza Education Center
- 24th Licensed Precepting Basics, Fireside Room
- 30th Nursing Research Brown Bag Session, "Descriptive Study of Mothers' Level of Grief/Miscarriage...", Hoppe Auditorium

October 2003

- 6th/13th ENPC Initial, Conference Center
- 7th (W) Courage, Health and Healing, Parish Nurse Conference, CentraCare Health Plaza Education Center
- 23rd Nursing Research Brown Bag Session, "College Students Tobacco Behavior, Depression...", Hoppe Auditorium
- 29th (W) Breast Cancer: Enhancing Survival, CentraCare Health Plaza Education Center (focus is for healthcare professionals)
- 30th (W) Orthopedic Conference, CentraCare Health Plaza Education Center

*Mar Schwinghammer
Education & Professional Development
Ext. 55642*




2003 Poster Contest Entries

The Nurse Week Committee proudly announces the winners and participants of the 2003 Poster Contest.

Overall Winners:

- Cup Feeding
By Jeanne Friebe, FBC
- Touching Lives with Healing Touch
By Mary Beth Schmidt, PACU
- Instilling Normal Saline into Trachs
By Dick Beastrom, PACU
- New Surgical Hand Scrub
By Larry Asplin, Surgery
- Imaging Department
By Susan Justison, Imaging

Honorable Mentions:

- Tracheostomies and Suctioning
By Barb Manuel & Marie Kirchner,
RT/Med/Onc
- The Future is Now – Mini Hip Replacements
By Sonja Folger, Ortho/Neuro
- Alternatives to Restraints 
By Sonja Folger, Ortho/Neuro
- Complementary Therapies for Pregnant Women
By Jeanne Friebe, FBC
- Techniques for Angiography Site Hemostasis
By Kris Menke and Sherri Sykora, CPRU
- Pre-term Labor Guidelines
By Mickie Pittman-Leyendecker, FBC
- Automated Documentation in Critical Care
By Aleen Roehl, Critical Care
- Progressive Care Units
By Joy Plamann and Blake Zenner,
MPCU/SPCU
- Child Passenger Safety
By Barb Reuter and Michelle Scspaniak, FBC

- Chest Tubes
By Susan Anderson, Med II




The contest displayed amazing creativity, expertise, and dedication to excellence. We would like to recognize all 19 participants who, together, created 15 posters. All the entries promoted professionalism and the commitment to continual education we are striving for at St. Cloud Hospital.

Thanks for helping us celebrate Nurse Week in fine fashion.

The Nurse Week Committee

Skills Set: Seizures, Care of Patient With

1. Assess using Glasgow Coma Scale and vital signs after seizure and reorients patient and explains event.
2. Assesses for seizure activity:
 - a. Clonic/tonic activity.
 - b. Unresponsiveness.
 - c. Inappropriate behavior.
 - d. Twitching or jerking of face or extremities.
 - e. Memory Loss.
 - f. Incontinence of bowel or bladder.
3. Provides Patient Safety: 
 - a. Assess level of safety needed. Measures include:
 1. **Standard is two padded side rails (if four are needed, follow Restraint Policy)**
 2. Close observation of patient with any activity.
 3. Oxygen and Oral suction available at bedside.
 4. Bed in low position.
 5. Helmet worn if available.

Original: 5/7/03

(*Please note the side rail information clarification: You must follow Restraint Policy if Physician orders 4 padded side rails.)

*Pat Rauch
Director, Ortho/Neuro*

Organ & Tissue Donation

The prompt to remember to call Lifesource to determine if a person is eligible for donation is on the death checklist.



Please remember to make that phone call. There is a federal law (from Medicare) that requires hospitals to contact the organ procurement agency at the time of brain or cardiac death.

A physician cannot say, “the person’s eligible for donation” and then we don’t call. We ALWAYS have to call. Thank you.

Roberta Basol
Director, Critical Care

Congratulations to the Following Who Have Achieved or Maintained Their Level IV and III Clinical Ladder Status!

Level IV’s

Karla Becker, CNOR Surgery

- *Neuro Stimulator Policy*
- *Education and Professional Development Department – Wisconsin Nurse’s Association*
- *Inservices: Endoscopy Tissue Usage Process; Freeze Watch Indicator; Pacemaker Batteries; Bair Hugger; Fem Stop; Regent Valves*

Bonnie Curtis, CCRN CCNS

- *Sedation Protocol*
- *Inservices: Code Blue; Biphasic Defibrillator*
- *Instructor ACLS*
- *PI Audit*
- *Documentation Change Broncho Lab Ordering*
- *CCRN*
- *AACN – CMAC Membership Chair*

Level III’s

Rugh Crowe, RN CCE

- *Inservice – PICA*
- *Nursing Care Group Leader*
- *Certified Donor Requested*
- *Preceptor*
- *Nurse Practice*

Rhonda Fitztherm, RN CCNS

- *Restraint Inservice*
- *Documentation Supervisor*
- *Restraint Audit*
- *Preceptor*
- *Practice Committee*
- *AACN*

Jill Harris, RN KDB

- *Fire Escape Route*
- *Policy Manual*
- *Inservices: Nursing and the Law; Handwashing*
- *Managing Fluid Intake Poster*
- *HCD – OSHA Regulation – Pain Mgmt. Audit*
- *ANNA*

Mary Loven, RN Alcove

- *Pre-evaluation Checklist*
- *Patient Readiness Policy*
- *Operative Site Audit Tool*
- *Perioperative Practice Committee*
- *Perioperative Coordination Committee*
- *Guatemala*

Nate Manning, RN Telemetry

- *Inservices: Complications of V-fib; Biphasic Station*
- *Heart Center Tour Guide*
- *Preceptor*

Colleen Olson, RN Surgery

- *Cross Reference Numbers and Cautery – Tourniquet*
- *Inservices: C-Section; C Locker; Ethicon Stapler; Engnet*
- *Preceptor*
- *FHT Monitor Skill Set*
- *Employee Satisfaction Co.*

Mary Rennie, RNC CSC

- *Orientation Guideline*
- *Nurse Process Audit*
- *Preceptor*
- *Perioperative Committee Chairperson*
- *RNC*

Michelle Templin, RN Med Unit

- *Restraint Reminder*
- *Restraint Audit*
- *Preceptor*
- *Practice Committee Co-Chair*
- *Port Certified*

